



**MFA**  
MUSEUM OF FINE ARTS  
ST. PETERSBURG, FLORIDA

## 2016 ANNUAL REPORT





## MISSION STATEMENT

Our mission is to engage, educate, and excite the community by collecting, exhibiting, and preserving works of art for the enjoyment of all.

## VISION STATEMENT

The Museum of Fine Arts, St. Petersburg, Florida will be the most vibrant cultural leader in the community. Its comprehensive collection, exhibitions, and programs will celebrate art and engage the diverse cultures and communities it serves.

## VALUES

We value:

- Excellence and integrity in the Museum's stewardship
- Artistic creativity and cultural diversity
- Education and engagement
- Commitment and support of our community
- Accessibility and inclusiveness
- Best practices as an organization



Jana (or Jain) Shrine, India, Gujarat, Patan, c. 1600, Carved and painted wood  
Gift of Louis E. Seley and sons Hervey and Elliott, Jr.

## CONTENTS

LETTER FROM THE CHAIRMAN OF THE BOARD .....	4
FINANCIAL REPORTS .....	5
2016 LEADERSHIP .....	6
EXECUTIVE COMMITTEE	
BOARD OF TRUSTEES	
HONORARY TRUSTEES	
MFA STAFF	
EXHIBITIONS .....	7-8
PROGRAMS .....	9
SUPPORT GROUPS .....	10
STUART SOCIETY .....	11
ANNUAL GIVING .....	12-13
GIFTS OF ART .....	14
IN KIND GIFTS .....	14
MATCHING GIFTS .....	15
MEMORIALS AND TRIBUTES .....	16-17
LEGACY SOCIETY .....	18
WAYS TO GIVE .....	19

# FROM THE CHAIRMAN OF THE BOARD



Last year was a year of achievement and transition. 124,609 people enjoyed a wide range of exhibitions and public programs. We began with portrait drawings and oil sketches spanning four centuries and organized video artist Shana Moulton's first solo museum show in the United States, including a performance piece/opera that drew a capacity crowd.

We also presented our first exhibition of musical instruments—classical guitars from the Collection of Robb and Susan Hough—and an MFA Guitar Festival, which featured contemporary masters of the instrument. That exhibition was on view in the Hazel Hough Wing, named for Robb's mother, who became a lifetime Honorary Trustee in 2016. The MFA would not be where it is today without the many contributions of Hazel and William Hough. We also displayed photography, folk art, and one of the largest exhibitions of Latino art ever presented in the area.

Our collection of approximately 20,000 works is our foundation and has an international reputation. Georgia O'Keeffe's *White Abstraction (Madison Avenue)*, 1926, was selected for the artist's solo exhibition at the Tate Modern, her largest ever in London. The painting *Julie Le Brun as Flora* (1799) by her mother Élisabeth Louise Vigée Le Brun was a star of the artist's first retrospective at the Metropolitan Museum of Art in New York and the National Gallery of Canada in Ottawa.

Our educational programs reach people of all ages. In January, large crowds watched the creation of a sand mandala over the course of two weeks in the Mary Alice McClendon Conservatory, and in April, 2,000 children and adults—a record—became artists during our free Painting in the Park. They even turned a car into their canvas.

More than 10,000 students, from prekindergarten to college, participated in group tours, including every sixth-grade student in the Pinellas County Schools. In addition, adults from all walks of life learned more about art through nearly 700 docent-led tours.

After more than five years at the helm, Dr. Kent Lydecker retired as Executive Director. Kent dramatically expanded the MFA's educational programs and community outreach. He joined forces with the Tampa Museum of Art for the pioneering *Our Generation: Young Chinese Artists*, a collaborative exhibition that created a cultural bridge across the bay. In 2013, he led the renovation of the galleries and the reinstallation of the collection in the original building, a project which normally takes years to complete. Kent has left his mark on the MFA and the community.

A national search for a new executive director followed, leading to the appointment of Kristen A. Shepherd, who began in mid-December. A committee of trustees, chaired by Vice Chair Cathy Collins, and the search firm Koya Leadership Partners led that effort. We are very grateful to Dr. Jerry N. Smith, Hazel and William Hough Chief Curator, for serving as Interim Executive Director during the year.

I am also grateful to my fellow trustees for their service and dedication. We have strong committees charting the future of our museum, and we have many loyal donors, members, and volunteers—like you. Thank you all for making 2016 an exceptional year.

A handwritten signature in black ink that reads "Mark J. Mahaffey". The signature is fluid and cursive.

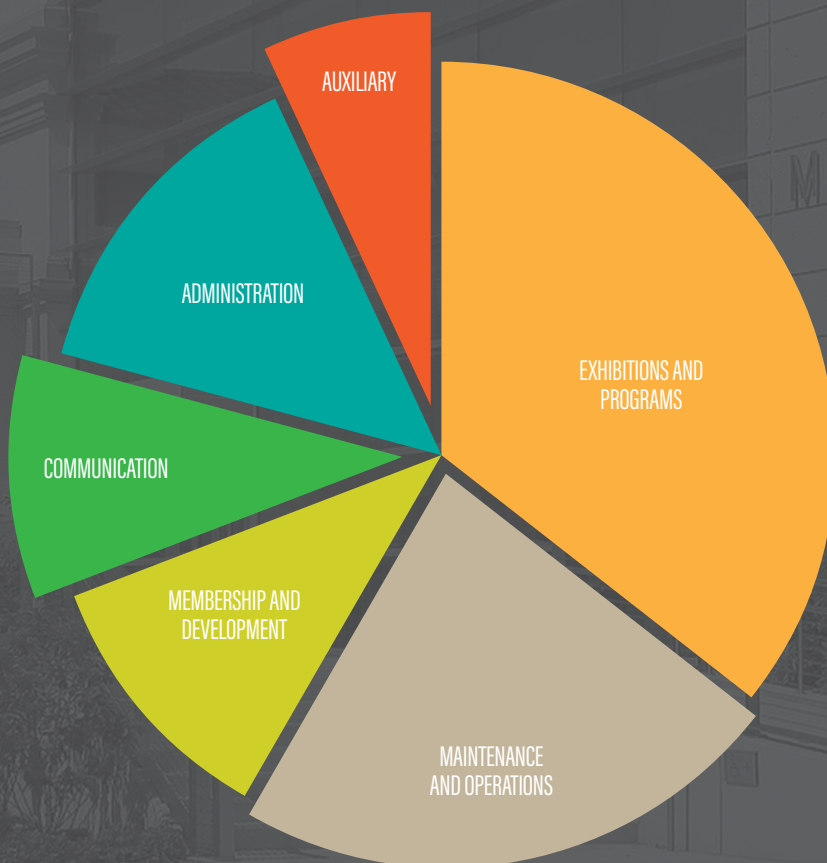
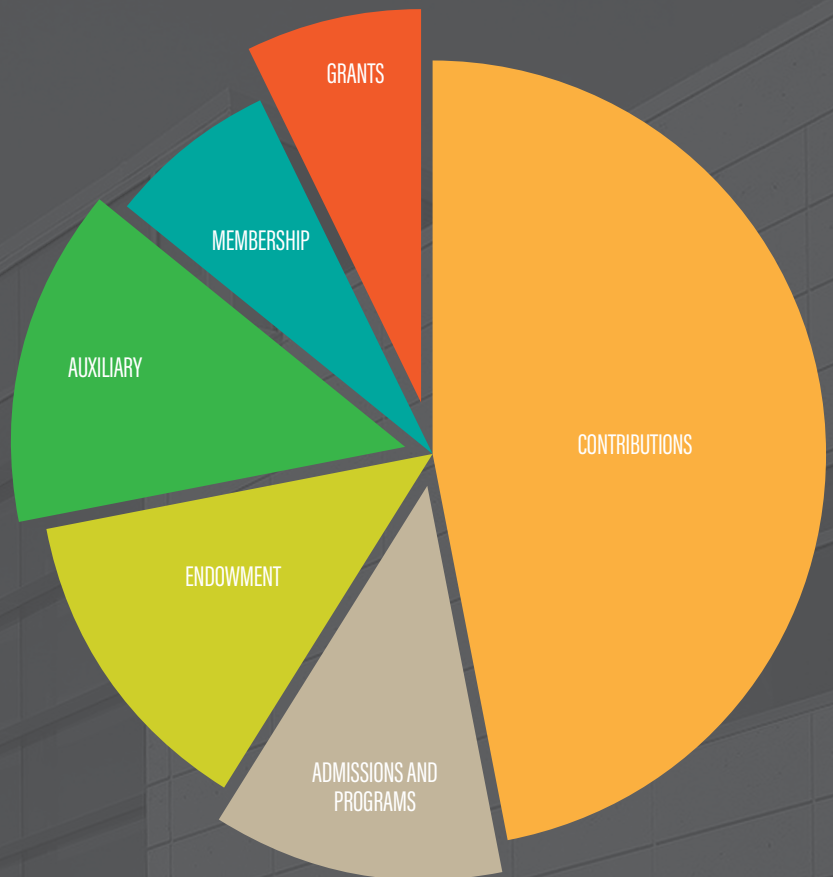
Mark Mahaffey  
Chairman of the Board



## 2016 REVENUE

Contributions	\$2,134,595	47%
Admission and Programs	\$540,935	12%
Endowment	\$606,630	13%
Auxiliary	\$640,859	14%
Membership	\$322,745	7%
Grant	\$320,842	7%

<b>TOTAL REVENUE</b>	<b>\$4,566,606*</b>	<b>100%</b>
----------------------	---------------------	-------------



## 2016 EXPENSE

Exhibitions and Programs	\$1,417,060	36%
Maintenance and Operations	\$905,471	23%
Membership and Development	\$420,341	11%
Communication	\$385,561	10%
Administration	\$562,671	14%
Auxiliary	\$267,752	7%

<b>TOTAL EXPENSE</b>	<b>\$3,958,856*</b>	<b>100%</b>
----------------------	---------------------	-------------

# 2016 LEADERSHIP

## EXECUTIVE COMMITTEE

**Mark Mahaffey**, Chair  
**Cathy Collins**, Vice-Chair  
**Skipp Fraser**, Treasurer  
**Clark Mason**, Secretary  
**Darryl LeClair**  
**Glenn Mosby**  
**Fred Razook**

## BOARD OF TRUSTEES

**Erin Smith Aebel**  
**Roy Binger**  
**Laura Militzer Bryant**  
**Dr. Gordon Gilbert**  
**Jim Gillespie**  
**Troy Holland**  
**Joe Jimenez**  
**Fay Mackey**  
**Christina Majeed**  
**Mary Alice McClendon**  
**Patti Novack**  
**Jim Reichert**  
**Dr. Dimity Carlson**, ex officio  
**The Hon. Rick Kriseman**, ex officio

## HONORARY TRUSTEES

**Seymour Gordon**  
**Hazel Hough**  
**Carol Upham**

## MFA STAFF

**Kristen A. Shepherd**, Executive Director  
**Diana Waters**, Chief Financial Officer  
**Vicki Sofranko**, Assistant to the Director  
**Dr. Jerry N. Smith**, Hazel and William Hough Chief Curator  
**Katherine Pill**, Curator of Contemporary Art  
**Ashley C. Burke**, Registrar  
**Bridget Bryson**, Manager of Curatorial Affairs & Digital Projects  
**Dimitri Lykoudis**, Senior Preparator  
**Jorge Valenzuela**, Preparator  
**Robin O'Dell**, Curatorial Administrator & Manager of Photographic Collections  
**Stephanie Chill**, Curatorial Assistant  
**Erin Wilson**, Curatorial Assistant  
**Audrie Rañon**, Director of Retail Operations  
**Billy Summer**, Manager of Visitor Services  
**Jeff Surrena**, Assistant Store Manager  
**Anna Glenn**, Curator of Public Programs  
**Mary Szaroleta**, Associate Curator of Public Programs  
**Eileen Bartelt**, Receptionist & Group Tour Coordinator  
**Steve Hack**, Receptionist & Group Tour Coordinator  
**David Connelly**, Director of Public Relations  
**Susan Robertson**, Director of Marketing  
**J.P. Fatseas**, Director of Operations  
**Daryl DeBerry**, Director of Development  
**Margaret Murray**, Manager of Donor Development  
**Dr. Teresa Wilkins**, Manager of Membership  
**Rachel Gaddoni**, Membership & Volunteer Coordinator  
**Amanda Bonanno**, Development Coordinator



# EXHIBITIONS

From women printmakers to folk artists, and civil rights to self-improvement, themes of 2016 exhibitions were thought provoking and as varied as the media in which they were created. Two galleries have new purpose: the extensive MFA Photography collection is on rotation in the M. Acheson Gallery three months, and the Malone Gallery now features a new Spotlight Series on regional artists with *Vantage Points: Paintings by Mernet Larsen* as the inaugural exhibition.

## CARRIE SCHNEIDER: READING WOMEN

**November 7, 2015 – January 17, 2016**

As a complement to the Marks Made exhibition, this video installation was a series of 100 vignettes of women reading as a mode of portraiture reflecting the inner states of the female subjects it featured.

## I REMEMBER BIRMINGHAM

**November 14, 2015 – February 28, 2016**

Last displayed in 2005, this series of seven hand-pigmented glass blocks and seven relief prints were created in 1997 by John T. Scott and the University of South Florida's Graphicstudio. Part of the Museum's collection, these pieces commemorate the racially motivated 1963 bombing in Birmingham, Alabama that resulted in the deaths of four young girls.

## PIOTR JANOWSKI: CURIOSITY

**December 3, 2015 – January 19, 2016**

Piotr Janowski made international headlines after creating a large-scale installation in Tarpon Springs by applying aluminum foil to every inch of his bungalow and driveway, as well as the land's surrounding palm trees. He also added sculptural elements, reminiscent of the human ear. This same process was used for a public art installation on the grounds of the Museum that invoked discussion of artistic intent and public reception.

## 50 ARTWORKS FOR 50 YEARS: SECOND LOOK

**January 9 – March 13, 2016**

Continuing as the second installation from our 50th anniversary celebration, this exhibition contained works donated to enhance the MFA Collection including a 17th century Dutch painting by Daniel Vertangen; Japanese prints; Art Nouveau vases; a glass work by Richard Ritter; contemporary sculpture by Dominique Labauvie; contemporary prints by Sol LeWitt, Jimmy Ernst and Carl Tandatnick; drawings by Seymour Lipton and photographs by several artists including Herb Snitzer, John Sexton, Len Prince and Julie Blackmon.

## CONTEMPLATING CHARACTER: DRAWINGS AND OIL SKETCHES FROM JACQUES-LOUIS DAVID TO LUCIAN FREUD

**February 13 – May 29, 2016**

This exhibition of 151 works was drawn from the collection of Robert Flynn Johnson, Curator Emeritus, Achenback Foundation for Graphic Arts, Fine Arts Museums of San Francisco. Rare portrait drawings and oil sketches ranged from an eighteenth-century work by Jacques Louis David to a twentieth-century contemporary portrait by Lucian Freud.

## THE ART OF THE CLASSICAL GUITAR

**February 13 – May 29, 2016**

A first for the Museum, this display of musical instruments from 1890 to present day was accompanied by performances with leading classical guitarists, demonstrating the beauty of these acoustic guitars both visually and acoustically. This privately owned collection and concert series sponsored by the Hough Family Foundation brought together visual art and music for a unique combination.

## CHRISTIAN MARCLAY: TELEPHONES AND SOUND HOLES

**February 3 – May 16, 2016**

This spotlight exhibition included two works by multimedia artist Christian Marclay: *Telephones* (1995) and *Sound Holes* (2007), loaned to the MFA by Paula Cooper Gallery, New York and Graphicstudio, University of South Florida Collection, respectively. Marclay's particular use of sampling mines popular culture—most famously films as in *Telephones*—allowing the artist to create new narratives that are at once familiar and strange.

## MEASURED LIFE: WORKS BY VICKY COLOMBET, BABS REINGOLD AND TIP TOLAND

**March 5 – June 26, 2016**

This first exhibition in the Malone Gallery set the tone to feature local artists in what is now known as the Spotlight Series with works by these artists. Taken together, these works allow for a reflection on the passages of time, and a consideration of how it is measured.

## VANESSA DIAZ: BEGINNING AT THE CORNICE, NOT THE FOUNDATION

**April 20 – July 9, 2016**

Working in the Museum's decorative arts galleries and period rooms, artist Vanessa Diaz created a site-specific installation, initiating discussion about the context of art within domestic and institutional settings.

PRIMARY SUPPORT FOR THE MUSEUM'S EXHIBITIONS IN 2016 CAME FROM THE STATE OF FLORIDA DEPARTMENT OF STATE DIVISION OF CULTURAL AFFAIRS, THE FLORIDA COUNCIL ON ARTS AND CULTURE, THE MARGARET ACHESON STUART SOCIETY, AND THE CITY OF ST. PETERSBURG OFFICE OF CULTURAL AFFAIRS WITH ADDITIONAL SUPPORT FROM DUKE ENERGY.



# EXHIBITIONS

## HAROLD EDGERTON: WHAT THE EYE CAN'T SEE

**May 7 – July 31, 2016**

Using photography to extend the capabilities of the human eye, Harold Edgerton created some of the most memorable photographs ever made. Organized by the Museum of Fine Arts, the exhibition was created from and celebrates the extensive MFA photographic collection.

## SHANA MOULTON: JOURNEYS OUT OF THE BODY

**June 18 – October 9, 2016**

Another first for the MFA was to host this artist's first solo exhibition in the United States. Interactive video installations and performance art presented a humorous yet earnest exploration of self-improvement. In the last week of the show, the artist returned for a live performance of her opera, another integration of arts and media with visual art, music and performance art.

## VANTAGE POINTS: PAINTINGS BY MERNET LARSEN

**July 2 – October 30, 2016**

Thanks to Museum donors Eric Lang Peterson and Michael Graham, the Museum of Fine Arts is proud to have four major paintings by Larsen from across her career in the collection. Featured in our Artist Spotlight Series, these complex paintings create tension between volume and space in an abstract yet narrative style, with a unique sense of perspective that makes her paintings so engaging.

## FROM THE HEART: FOLK ART ON PAPER

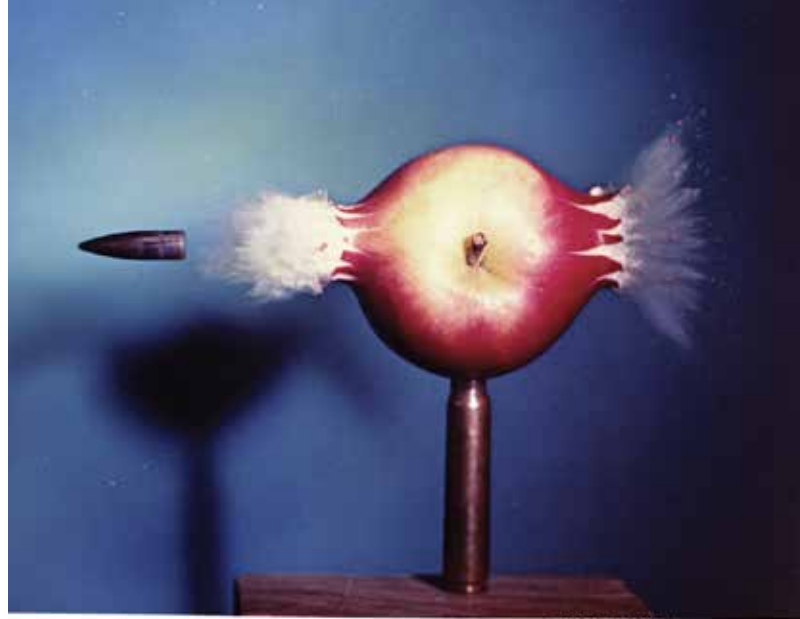
**August 6 – November 13, 2016**

Timed in conjunction with the national gathering of the Folk Art Society of America in St. Petersburg, this exhibition primarily drawn from the Museum's collection was supported by collectors Jim and Martha Sweeny, and represented important works by self-taught artists such as Bill Traylor and Dilmus Hall.

## MARKS MADE: PRINT BY AMERICAN WOMEN ARTISTS FROM 1960S TO THE PRESENT

**October 17, 2015 – January 24, 2016**

Featuring more than 75 works by such iconic artists as Vija Celmins, Helen Frankenthaler, Lee Krasner, Joan Mitchell, Elizabeth Murray and Pat Steir, this exhibition conveyed the breadth of innovation of both technique and conceptual approaches over the past 50 years. The accompanying catalogue included contributions by art historian Susan Tallman, Master Printer Erika Greenberg-Schneider and our own Curator of Contemporary Art Katherine Pill.



Harold Edgerton (American, 1903–1990) *Bullet Through Apple*, 1964, dye transfer print, Gift of Lee Arnold and Robert L. Drapkin

## OUR AMERICA: THE LATINO PRESENCE IN AMERICAN ART

**October 29, 2016 – January 22, 2017**

This exhibition presented 92 works highlighting the rich and varied contributions of Latino artists in the United States since mid-century. Drawn from the Smithsonian American Art Museum, it explored how Latino artists shaped the movements of their day with artists such as Mario Brito, Frank Romero, Ignacio Gomez, Marcos Dimas, Margarita Cabrera, Sophie Rivera and Ana Mendieta.

## THE FAR NORTH: INUIT PRINTS AND SCULPTURE

**November 19, 2016 – March 19, 2017**

In the 20th century the Inuit people of Canada, formerly known as the Eskimo, developed a distinctive visual language utilizing modern materials and techniques. Through their art, the Inuit continue a vital story-telling tradition amongst themselves and the broader public. This exhibition reflected the confluence of traditional ways of life and the contemporary world with works from the MFA collection and special loans from private collectors.

The Museum is deeply appreciative of the following sponsorship contributions for exhibitions:

**Brighthouse Networks**

**City of St. Petersburg**

**Duke Energy**

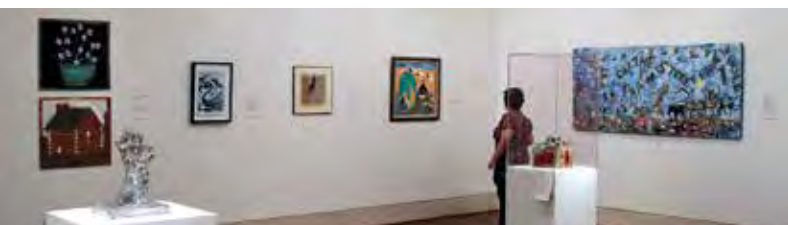
**Hough Family Foundation**

**Shumaker, Loop & Kendrick, LLP**

**State of Florida Division of Cultural Affairs**

**Margaret Acheson Stuart Society**

**Martha and Jim Sweeny**





# PROGRAMS

As with exhibitions, the Museum is deeply appreciative of 2016 general program support funding from the **State of Florida, Margaret Acheson Stuart Society, City of St. Petersburg** and **Duke Energy**. Additional sponsorships of specific programs allowed the Museum to offer more than 300 public programs for youth to adult.

Engaging the community in this way is central to the MFA mission and the partnerships with individuals and businesses are vital. Thank you to these contributors whose gifts supported public programs:

**AARP Florida**

**Bank of America**

**Chapman Foundation**

**Cinema Squatch LLC**

**City of St. Petersburg**

**Coastal Properties Group/Christies**

**International**

**Cowles Charitable Trust**

**Duke Energy**

**Euro Cycles of Tampa**

**Fields Galley Private Foundation**

**Annie M. Francis**

**Focardi - Great Bay Foundation**

**Gobioff Foundation**

**Hough Family Foundation**

**Kane's Furniture**

**Pinellas Community Foundation**

**J Crayton Pruitt Foundation**

**Public Art Project, Inc.**

**Robert F. Shuck**

**St. Petersburg Clearwater Film Commission**

**State of Florida Division of Cultural Affairs**

**Margaret Acheson Stuart Society**

**SunTrust Foundation**

**Wal-Mart Foundation**

**Westminster Communities of St. Petersburg**



# SUPPORT GROUPS

With interests ranging from decorative arts to photography, affinity groups focus on a variety of interest areas and add to the educational offerings available to members through gallery talks, guest lectures, study trips and other arts opportunities. There are six membership groups at the Museum with the following interests:

## COLLECTORS CIRCLE

For those with special interest in the collection, the Collectors Circle enjoys activities that foster an appreciation of art through lectures and study trips sponsored by Northern Trust and RBC Wealth Management. In April, their Collectors Choice gala provided funds to purchase Richard Miller's *Woman Sitting at a Table*, currently on display in the Smith Gallery.

## DOCENTS

This dedicated corps of volunteers introduces Museum guests to art across the ages. Giving two tours every day, as well as group tours by reservation and shepherding the more than 7,000 sixth grade students who come to the Museum during the school year, these individuals bring art to life. In 2016, a new group of docents began their six-month training process to learn about the works in the collection.

## FRIENDS OF PHOTOGRAPHY

This group is dedicated to increasing public awareness of fine art photography, with the Museum's collection recognized as one of the best in the southeastern United States. Their special events included a skating party and Pic-A-Pick, with funds going toward the purchase of a portfolio of work by photographer Bill Yates in 2016.

## FRIENDS OF THE DECORATIVE ARTS

Art that is functional as well as beautiful includes ceramics, furniture, jewelry and textiles. Members of FODA participate in guest lectures and presentations focused on this segment of the MFA Collection. This year's speakers included glass artist Eric Hilton discussing his work *Seeds of Enlightenment*, and the Museum's own Dr. Teresa Wilkins presenting Hawaiian feathered art forms.

## MARLY MUSIC SOCIETY

The relationship between music and visual art is supported in a variety of ways at the MFA. For the first time and in tandem with the *Art of the Classical Guitar*, a series of guitar concerts showcased the beautiful instruments, with one performance courtesy of Marly Music. Music in the Marly, a series of summer concerts, is in keeping with founder Margaret Stuart's love of music.

## THE CONTEMPORARIES

Now in its third year, this group shares an interest in contemporary art. Visiting working artists' studios and private collections, or hearing from guest artists at a lunchtime lecture series, Contemporaries add a new level of engagement in public programs.

Thank you to these sponsors, who sponsored programs through activities within these groups:

**DeLoach & Hofstra, P.A.**

**The Bank of Tampa**

**Fifth Third Private Wealth**

**Green, Henwood & Hough Investment Group**

**Matthew Lytell and Associates**

**Northern Trust**

**Northwestern Mutual**

**RBC Wealth Management**

**Helen Torres Foundation**

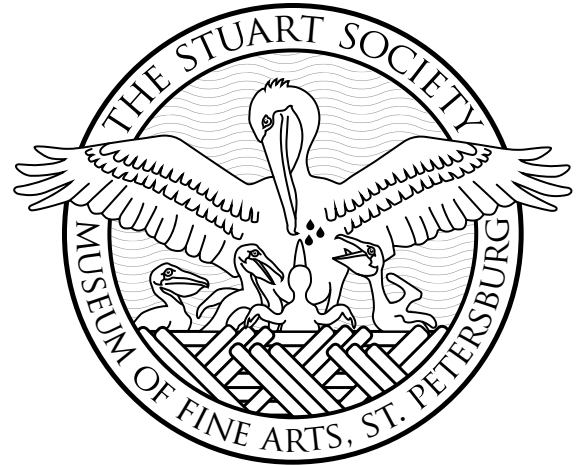
**Westminster Palms**



# THE MARGARET ACHESON STUART SOCIETY

Honoring the name and traditions of MFA founder Margaret Acheson Stuart, The Stuart Society mission is to promote the welfare of the Museum; stimulate public interest and participation in Museum activities; increase the Museum's general membership, and maintain a close acquaintance with the activities of the Museum.

With approximately 400 members, this all-volunteer group has its own 501c3 non-profit status, and as a separate organization is a major donor to the Museum. Many serve as museum docents, help in the Museum Store, or give of their time at educational programs sponsored by the Museum such as Painting in the Park, a hands-on arts experience free to the public and attended by more than 2,000 children this past spring.



In 2016, they presented a gift of \$188,000 from the proceeds of their myriad events that included Art in Bloom, Wine Weekend, Affaires d'Art, SmARTly Dressed, and the Plaza of Honor Bricks project. For their efforts, The Stuart Society members were recognized as Service Organization of the Year award recipient for 2015 at a National Philanthropy Day event by the local chapter of the Association of Fundraising Professionals. The Museum is deeply grateful for this outstanding generosity of spirit that results in thousands of volunteer hours each year.

Stuart Society leadership at the annual Past Presidents Coffee





# ANNUAL GIVING

The MFA Fund is the foundation of all contributions to the MFA. Such unrestricted gifts support essential operating expenses and special projects as a crucial part of the Museum's annual revenue. Additionally, some donors provide support through purpose-specific gifts such as purchases of art or endowment contributions. Each and every donation is vital to our mission.

## \$50,000 AND ABOVE

Joanne and Bill Edwards  
Dr. Richard Eliason  
The Edward R. Godfrey Foundation  
Hazel and William Hough  
Marianne and Mark Mahaffey  
State of Florida Division of Cultural Affairs  
Margaret Acheson Stuart Society  
Penny and Jeff Vinik

## \$25,000 TO \$49,999

Anonymous  
George Ellis  
Mary and Tom James

## \$10,000 TO \$24,999

Anonymous  
Suki and John Carson\*  
Cathy and Steve Collins  
Community Foundation of Tampa Bay  
Gerry and Allen Davidson  
Marina and Ric Dillon  
Ann and Bill Edwards  
George Ellis  
Glenn and Dav Mosby  
Patti and Irwin Novack  
Robert Durden Family Fund

## \$5,000 TO \$9,999

Anonymous  
Fields Galley Private Foundation \*  
Nina Focardi  
Emily and Jim Gillespie  
Gobioff Foundation  
Toni and Kent Lydecker \*\*  
Monica and Clark Mason  
Mary Alice McClendon  
Rita and Stephen Peters  
Dr. John E. Schloder and Terry Leet  
Drs. Dorothy and Edwin Sved

## \$1,500 TO \$4,999

Anonymous  
Erin and Bruce Aebel  
Margaret and Dr. Edward Amley  
Charlotte Bacon  
Deborah and George Baxter  
Kathleen Swann Brooks Family Foundation  
Laura and Matt Bryant  
Dimity and Mark Carlson  
Tina and Bob Douglass  
Joyce and Skipp Fraser  
Sharon and Victor Gardner  
Michele Kidwell-Gilbert and Dr. Gordon J. Gilbert  
Susan and Seymour Gordon  
Martha Ann Haile  
Dr. Ilda Hall  
Chris and Bob Hilton  
Judy and Troy Holland  
Angelina and Joe Jimenez \*  
Antoinette King and Thomas Brenner  
Melissa and Darryl LeClair  
Jennifer Petrini-Lovelady and Jeff Lovelady  
Fay Mackey  
Maggi McQueen  
Yvonne and Peter Pav  
Eric Lang Peterson  
Gail and Fred Razook  
Carolyn and Frederick Rehberger  
Jim Reichert  
Jean Rocchi  
Arlene Rothman  
Nancy and Robert Shannon  
Vickie Hamilton-Smith and Jerry Smith\*\*  
Julia and Eugene Sorbo  
Ellen Stavros  
Frances and Gus Stavros  
Carol Upham  
Allison Watson \*  
Carole and Clem White

A SPECIAL GROUP, KNOWN AS CIRCLE LEVEL DONORS, MAKE THE MUSEUM A PHILANTHROPIC PRIORITY THROUGH UNRESTRICTED GIFTS, WHICH HAS MEANINGFUL IMPACT ON THE ENTIRE COMMUNITY. AS THIS HONOR ROLL OF SUPPORTERS CONTINUES TO GROW, THEY DESERVE SPECIAL RECOGNITION IN THIS ANNUAL REPORT.

## DIRECTOR'S CIRCLE

Joanne and Bill Edwards  
Dr. Richard Eliason  
Hazel and William Hough  
Mary and Tom James  
Marianne and Mark Mahaffey  
Penny and Jeff Vinik

## FOUNDER'S CIRCLE

Anonymous  
Suki and John Carson  
Cathy and Steve Collins  
Gerry and Allen Davidson  
Marina and Ric Dillon  
Ann and Bill Edwards  
Glenn and Dav Mosby  
Patti and Irwin Novack  
Rita and Stephen Peters  
Jim Reichert

## UP TO \$1,499

Toni and Gene Altman  
AmazonSmile Foundation  
Karen and Fred Amundrud \*  
Anonymous  
Kathleen and Raymond Arsenault  
Lois and Marvin Atkins  
Janet Augenbraun  
Angela and Robert Baisley  
Andrea and Russell Barlow  
Eileen Bartelt \*\*  
Jane and David Beam  
Judith Beck  
Marilyn and Philip Benjamin  
Susan and Peter Betzer  
Roy Binger  
Elisabeth Blair  
Leslie and William Blount \*  
Margaret Bowman  
Mary Alice Braukman  
LaRee and Ashleigh Brock  
Jacqueline Ley Brown and Dr. William Brown  
Donna and Thomas Brumfield  
Roy Lewis Bubb  
Ruth and Donald Campagna  
Pamela and George Campbell \*  
Ursula and Edward Carroll  
Jean and George Catanese  
Rene Clark and Richard Davis  
Elizabeth Coerver  
Hillary Carlson Cone  
Janet and Jon Cook \*  
Karen S. Corson  
Audrie Cuddy-Ranon \*\*

Daryl DeBerry \*\*  
 Debutante Ball of St. Petersburg \*  
 Simone and Rep DeLoach  
 Muriel Desloovere  
 Paula and John Disa  
 Carol and Justus Doenecke  
 Rane and Robert Drapkin  
 Ruth and Jim Duffy  
 Mariel and David Dumin  
 Patricia Eckert  
 Sandra Edmonson  
 Jane and David Egbert  
 Euro Cycles of Tampa \*  
 Chloe Firebaugh  
 Elizabeth Fisher  
 The Rev. Peter W. Fleming and The Hon. Marion L. Fleming  
 Florida Hospital Foundation  
 Marie Frances  
 Sue Froid  
 Louise and Dr. John T. Garrigues, Jr.  
 Emily Geuder\*  
 Katherine Gibson  
 Michael Graham  
 Vera Anne and Lawrence Green  
 Laurel Greene  
 Steve Hack \*\*  
 Royce Haiman  
 Berneida Hall  
 Judy and David Hall  
 Helene and Jack Hardick  
 Margaret Harris  
 Linda and Howard Harris  
 Velva Lee Heraty  
 Susan and Mack Hicks  
 Sarah and David Hill \*  
 Alice and David Hoffman  
 Philip Hoffman and Hans Susskind  
 Roberta and Paul Holland  
 Carol and W. Langston Holland  
 Elly and John Hopkins  
 Sarah and Don Howe  
 Linda and Christopher Hugues  
 Claudia and Dr. Lyman Hussey  
 Elizabeth and Catherine Hyden  
 IBM International Foundation  
 Leslie Joy Ickowitz \*  
 Calvin Johnson  
 Carol Ann and David Kaminski \*  
 Pamela and Brigitta Keating  
 Steven Kenny  
 Ruth and Lewis Kent  
 Leslie Kirsner  
 Douglas Land  
 Gerald Langlykke  
 Harold Leigh  
 Judith Kay Leonard

Helen Leslie  
 Beth Lind  
 Kathryn and George Ludwig \*  
 Susan Luehrs  
 Elizabeth and Charles Lyman \*  
 Christina Majeed  
 Mary Ann and Bruce Marger  
 Anne and Franklin Massari  
 Janet McBride  
 Virginia and Terence McCarthy  
 Virginia and Frank McConnell  
 Claudia McCorkle  
 Joan and Harry McCreary  
 Nathalie McCulloch  
 Jill and Edward McGrath \*  
 Laura and Thomas McGrath  
 Karen and Alex McKenna \*  
 Peter McNamara  
 Nancy Mentch  
 Elise and Tommy Minkoff  
 Marian Moore  
 Jayne and Alan Mossberg \*  
 Anne and Dr. Robert S. Nelson  
 John Nipher  
 Sarah Nisenson  
 Barbara and Michael Noonberg  
 Carolyn Nygren  
 Pam O'Brien  
 Robin O'Dell \*\*  
 Natalie and Richard Oliver  
 Meta Osborn  
 Susan and Dr. Gary Osher  
 Bonnie Otis  
 Faryaneh Overfelt \*  
 Beverly Pankonie and Mary Wantland  
 Fran and Charles Parsons  
 Cathy Patterson \*  
 Mary Perry  
 Isabelle Peterson  
 Carol and Michael Piper  
 Jacquelyn and Harry Piper \*  
 Margaret and Eugene Ponessa  
 Barbara Poore  
 Lisa and John Posey \*  
 Janet Raymond  
 Louise and Charles Reeves \*\*  
 Patricia and John Reppert  
 Elizabeth and Jon Reynolds  
 Margaret Ridge  
 Fran and Bud Risser  
 Susan Robertson\*\*  
 Heidemarie E. Robinson \*  
 Sylvia and Marvin Rosenfield  
 T. Marshall Rousseau  
 Natalie and Howard Rubin  
 Carol and J. C. Russell

Shirley Salomon  
 Anja Sarvarinne  
 Dolores Scales  
 Howard Schickler \*  
 Isabel and William Schoenberg  
 Margaret Scott  
 Joyce and Harold Seder  
 Lea and Marshall Seiden  
 Linnea Sennott  
 Mary Lee and Robert Setzer  
 Hassan Shamseddine and Joshua Beardslee \*  
 Jeffery Shibley  
 Sydni Shollenberger  
 Peg and Arthur Silvergleid  
 Carol and David Sjolund \*  
 Anne Soehl  
 Vicki and Jack Sofranko\*\*  
 Patty and Vikram Sriram  
 Loretta and James Stitt  
 Stanton Storer  
 Kathy and Bill Stover  
 Jane and Kurt Strasser  
 Eva and Russell Striplin Family Foundation  
 Dawn Sumner  
 Sunset Rotary Foundation, Inc.  
 Marian Tagliarino  
 Susan Taylor  
 Sheila Tempelmann  
 Dorothy Templet  
 The Ale and the Witch \*  
 Nancy Harris and Stephen Thomas  
 Cheerful Thornhill  
 Morrison Torrey and David Hirschman  
 Colleen Travers \*  
 Patricia and Eric Trexler \*  
 Mila and Jesse Turtle  
 Lothar Uhl  
 Mary Lou and Burrage Warner  
 Carolyn Warren  
 Nancy and Arthur Watson \*  
 Jane Weber Trust  
 Krista Whipple  
 Eleanor and Jay Whiteside  
 Jacqueline Williams and Todd Wilson\*  
 Suzanne Williamson  
 Evelyn Wilty  
 Diane and Marvin Winegar  
 Mari Wright  
 William Zewadski  
 Elizabeth Zimmer  
 Margaret Zinchuk  
 Marylee and Donald Zink

\* New Donor  
 \*\* MFA Staff

# GIFTS OF ART

The Museum's Collection is at the very core of our mission. To those who donated works that were accessioned in 2016, we are deeply grateful. Multiple gifts are noted in parentheses.

<b>Barry Andersen (3)</b>	<b>Pamela Miller, Robert Miller and Parker Miller Jr.</b>
<b>Anonymous (2)</b>	<b>Howard Mills</b>
<b>Dr. Robert Steven Bianchi</b>	<b>Barbara J. Nickerson-Estrada (35)</b>
<b>Joseph Constantino (4)</b>	<b>Kenda North</b>
<b>Darryl Curran (3)</b>	<b>Eric Lang Peterson (2)</b>
<b>Dr. Timothy Y.C. Choy Trust (31)</b>	<b>Sheila Pinkel (3)</b>
<b>Collectors Circle</b>	<b>Bill Rhoades (11)</b>
<b>Peter Foe (16)</b>	<b>Dr. John E. Schloder</b>
<b>Folk Art Society of America</b>	<b>Michael Stone (3)</b>
<b>Friends of Photography</b>	<b>The Contemporaries</b>
<b>Susanna Grady (5)</b>	<b>Lothar Uhl (3)</b>
<b>Helene and John A. Hardick (15)</b>	<b>Robert von Sternberg (6)</b>
<b>Jeannine A. Hascall</b>	<b>Melanie Walker (3)</b>
<b>Arlette and Gus Kayafas</b>	<b>Vicki Wilson (4)</b>
<b>Diane KW (4)</b>	
<b>Victor Landweber (8)</b>	
<b>Mary Alice McClendon (3)</b>	



Richard Edward (Emil) Miller (American, 1875-1943)  
*Woman Sitting at a Table*, circa 1903  
Oil on canvas  
Museum Purchase with funds donated by the Collectors Circle

# IN-KIND GIFTS

Individuals or businesses donating goods or services help our programs or other Museum activities. As a show of appreciation, consider giving your patronage to the following companies and share our gratitude with all those making in-kind contributions.

<b>Barley Mow Brewing Company</b>	<b>Hampton Inn &amp; Suites</b>	<b>Rapp Brewing</b>
<b>Big Storm Brewing Company</b>	<b>Lundy's</b>	<b>Redman Steele Floral Design</b>
<b>Brighthouse Networks</b>	<b>Mernet Larsen</b>	<b>St. Pete Brewing</b>
<b>Bury Me Brewing Company</b>	<b>Jacqueline Ley Brown</b>	<b>Tampa Bay Times</b>
<b>Cage Brewing</b>	<b>Mad Beach Craft Brewing</b>	<b>Telemundo</b>
<b>Cigar City Brewing</b>	<b>Mastry's Brewing</b>	<b>Urban Comfort Restaurant &amp; Brewery</b>
<b>Classic Architectural</b>	<b>Motorworks Brewing</b>	<b>Wells, Houser &amp; Schatzel P.A.</b>
<b>Courtesy Valet</b>	<b>Olympia Catering</b>	<b>WMNF 88.5</b>
<b>Darwin Brewery</b>	<b>Pair O'Dice Brewing</b>	<b>WUSF</b>
<b>Daryl DeBerry</b>	<b>Mary B. Perry</b>	
<b>Green Bench Brewery</b>	<b>Pinellas Ale Works</b>	



# MATCHING GIFTS

In some cases doubling the impact of a contribution, employees work with human resource departments at their places of employment to receive matching contributions. This is an effective and significant means of support. Please check with your employer and help us grow this list:

**Fields Galley Private Foundation**

**IBM International Foundation**

**Johnson & Johnson Matching Gifts Program**

**Morgan Stanley**

**RBC Wealth Management**

The most significant match in 2016 was from an individual challenge – Board Chairman Mark Mahaffey demonstrated outstanding generosity with a Trustee and Stuart Society match, effectively doubling individual contributions to the MFA Fund from Stuart Society and Board members at the end of the year. Thank you to the following individuals for rising to the Mahaffey Challenge with a combined total of more than \$150,000 designated to the 2016 MFA Fund:

## STUART SOCIETY PARTICIPANTS

Margaret Amley	Sarah Howe
Lois Atkins	Elizabeth Hyden
Andi Barlow	Ruth Kent
Jane Beam	Helen Leslie
Judith Beck	Kathryn Ludwig
Margaret Bowman	Toni Lydecker
Jacqueline Ley Brown	Jill McGrath
Dimity Carlson	Maggi McQueen
Suki Carson	Elise Minkoff
Jean Catanese	Rita Peters
Audrie Cuddy-Ranon	Eric Lang Peterson
Gerry Davidson	Carol Russell
Tina Douglass	Loretta Stitt
Patricia Eckert	Dawn Sumner
Chloe Firebaugh	Susan Taylor
Sue Froid	Sheila Tempelmann
Sharon Gardner	Dorothy Templet
Helene Hardick	Nancy Thomas
Susan Hicks	Carolyn Warren

## TRUSTEE PARTICIPANTS

Erin Aebel  
Laura Bryant  
Dimity Carlson  
Cathy Collins  
Jim Gillespie  
Bob Hilton  
Troy Holland  
Mark Mahaffey  
Mary Alice McClendon  
Glenn Mosby  
Patti Novack  
Fred Razook  
Jim Reichert  
Marshall Rousseau



Vishnu, The Preserver, With His Consorts, Lakshmi and Sarasvati  
12th century, India, West Bengal, Pala Dynasty (about 750-1200)  
Rajamajal black slate  
Gift of William C. Luban

# MEMORIALS AND TRIBUTES

Gifts made in honor or in memory of a person or event are meaningful to the Museum as well as to the honoree. This list acknowledges donors and their tributes in 2016:

## IN MEMORY OF NATHANIEL UPHAM ALLEN JR.

Jacqueline Ley Brown and Dr. William Brown  
Eric Lang Peterson

## IN MEMORY OF JOAN APPLEYARD

Eric Lang Peterson

## IN HONOR OF DAVID CONNELLY

Eileen Bartelt

## IN MEMORY OF THOMAS F. DEVOE

Barbara and Doug DeMaire  
Fay Mackey  
Barbara and Frederic McCoy  
E. Stan and Iris Salzer

## IN MEMORY OF NIELA ELIASON

Toni and Kent Lydecker  
Demi and Sam Rahall  
Dr. John E. Schloder

## IN MEMORY OF ELEANOR FOX

Betty and Edward Shamas

## IN HONOR OF TOM GESSLER

Fay Mackey

## IN HONOR OF ANNA GLENN

Patty and Vikram Sriram

## IN MEMORY OF CURTIS P. GLENN

David Connelly

## IN HONOR OF ROYCE HAIMAN

Ann Shelton

## IN MEMORY OF DR. JOHN HAMILTON

Eric Lang Peterson

## IN MEMORY OF CHARLES HENDERSON

Dr. John E. Schloder

## IN MEMORY OF DR. JOHN HOCHÉ

Barbara and Frederic McCoy

## IN MEMORY OF JASON KRIVY

Fay Mackey  
Dr. John E. Schloder

## IN MEMORY OF DOROTHY LANG

Margaret Benjamin  
Betty Jean Miller  
Geraldine and Donald Sweet

## IN MEMORY OF JOSEPH LAUGHLIN

Evelyn Jerger  
In Honor of Kent Lydecker  
Dr. John E. Schloder

## IN MEMORY OF MARY JOAN MANN

Simone and Rep DeLoach  
Fay Mackey  
Iris and E. Stan Salzer  
Betty and Edward Shamas

## IN MEMORY OF SAM MANN

Betty and Edward Shamas

## IN MEMORY OF RON MASON

Toni and Kent Lydecker  
Eric Lang Peterson  
Dr. John E. Schloder  
Judith Wells

## IN HONOR OF MARY ALICE MCCLENDON

Lauren Constantino and Bill McClendon  
Helen Hameroff and Frantz Christensen  
Demi and Sam Rahall  
Mary Perry

## IN MEMORY OF MADGE MCFALL

Iris and E. Stan Salzer

## IN MEMORY OF JOANE H. MILLER

Anje and Tim Bogott  
Susan Carlson  
Barbara and Frederic McCoy  
Tinker McKee  
Donna Holland Nagelsen  
Linda Rabe  
Rudolf Swoboda  
Sally Van Allen

## IN MEMORY OF JAMES MORTENSEN

Brenda Verbeck

## IN MEMORY OF VIOLET O'BRIEN

Linda and Kevin Breen

## IN MEMORY OF BARBARA OLSEN

Dr. John E. Schloder

## IN RECOGNITION OF WILLIAM PACHNER

Eric Lang Peterson



Albert Wein (American, 1915-1993), *Horizons (New Horizons)*, c. 1937, Cherry wood  
Museum purchase with funds donated in memory of Charles Mackey

#### IN HONOR OF MARY PERRY

Simone and Rep DeLoach

#### IN MEMORY OF DR. RICHARD E. PERRY

Hillary Carlson Cone  
David Connelly  
Daryl DeBerry  
Simone and Rep DeLoach  
Barbara and Doug DeMaire  
Ranee and Robert Drapkin  
Dana and Roger Dunn  
Helen Hameroff and Frantz Christensen  
Mardi Johnson  
Jacqueline Ley Brown and Dr. William Brown  
Dr. Henry L'heureux  
Toni and Kent Lydecker  
Barbara and Frederic McCoy  
Beverly Pankonie and Mary Wantland  
Demi and Sam Rahall  
Arlene Rothman  
Iris and E. Stan Salzer  
Dr. John E. Schloder and Terry Leet  
Mary Shuh  
Carol Upham  
Joan and David Walker  
Evelyn Wilty

#### IN HONOR OF CAROL PHELPS

Mary Perry

#### IN HONOR OF DEMI RAHALL

Helen Hameroff and Frantz Christensen

#### IN HONOR OF LOUISE REEVES

Simone and Rep DeLoach  
Dr. John E. Schloder

#### IN HONOR OF ARLENE ROTHMAN

Mary Ann and Bruce Marger

#### IN MEMORY OF SHELDON ROTHMAN

Helen Hameroff and Frantz Christensen

#### IN MEMORY OF STAN SALZER

Anonymous  
Mary and Louie Adcock  
Runelle and Jackson H. Bowman III  
Mary Jane and Jack Cartier  
Susan and Robert Churuti  
Evelyn and Jack Collins  
David Connelly  
Cara and Alvin Cox  
Lynn and David Cox  
Joan and Lawrence Cox

Barbara and Doug DeMaire  
Dotty Feinberg  
Emily Geuder  
Hilleary and George Gramling  
Kally and Bill Harvard  
Chris and Bob Hilton  
Carrie Johnson  
Barbara Johnson  
Helen Leslie  
Fay Mackey  
Victoria and David Malizia  
Anne and Dr. Franklin S. Massari  
Ruthanne and William McLean  
Glenn and Dav Mosby  
Faryaneh Overfelt  
Beverly Pankonie and Mary Wantland  
Mary Perry  
Eric Lang Peterson  
Carol and Michael Piper  
Michele and Kevin Platt  
Lindsey and Jim Robbins  
Janet Rosenquist  
Dr. John E. Schloder  
Betty and Edward Shamas  
Judith Stanton  
Lavinia and J. Thomas Touchton  
Keith and Hugh Tulloch  
Carol Upham  
Allison Watson  
Becky and Harold Wells  
Lisa and Peter Wells  
Ann Wells  
Evelyn Wilty

#### IN MEMORY OF MURIEL SANDINE

David Connelly  
Barbara and Doug DeMaire  
Robin O'Dell

#### IN HONOR OF NEIL SAVAGE

Iris and E. Stan Salzer

#### IN HONOR OF BETTY AND ED SHAMAS

David Connelly

#### IN MEMORY OF PETER SHERMAN

David Connelly  
Jacqueline Ley Brown and Dr. William Brown  
Susan and Mack Hicks  
Pamela and Victor Japour  
Dr. John E. Schloder

#### IN MEMORY OF STARR SHERMAN

Dr. John E. Schloder  
Mary Shuh

#### IN HONOR OF MARY SHUH

David Connelly

#### IN MEMORY OF JOSEPH SPRAIN

Anne and Peter Lanham

#### IN HONOR OF DONALD J. SWEET

Janice McKay

#### IN MEMORY OF LOTHAR UHL

David Connelly  
Toni and Kent Lydecker  
Dr. John E. Schloder



Fletcher Martin, American (1904-1979), *The Undeclared*, 1948, Oil on canvas  
Museum purchase with funds donated by The Collectors Circle



# LEGACY SOCIETY

By confirming intent to include the Museum as a beneficiary of an estate plan, these individuals secure the future of the MFA through wills and bequests of any amount. This visionary generosity can be unrestricted or for a specific purpose. Thank you to the following individuals for making the Museum part of your legacy:

Margaret Strum Acheson Allesee  
Margaret S. Amley  
Edward A. Amley  
Jim Amrhein  
Mark C. Anderson  
Lewis Andrews, Jr.  
Alexander Astrack  
Cynthia Astrack  
Susan C. Beaven  
Elizabeth Belting  
Robert A. Bennett  
Anna Bianchi  
Robert S. Bianchi  
Isabel Bishop  
Vance D. Bishop  
Louise Bishop  
Emily W. Bizjak  
Hazel Blair  
Geraldine Blazey  
Robert N. Blazey  
Elizabeth Bohlman  
Clara Boldt  
Rex Brasell  
William Brown  
Laura M. Bryant  
Keith E. Bucklew  
Penelope J. Burns  
Eddy Burns  
Bryce Burton  
Elnora Burton  
Guna Carr  
Bonita L. Cobb  
Hillary Carlson Cone  
Ralph Crammond  
Jean Crerar  
Carol Dameron  
Smelia Damjanovich  
Gary Damkoehler  
Bruce Dandrew  
John Davis  
Nomina C. Davis\*  
F. Delphine Day  
Diana B. Dorken  
Robert Douglass  
Tina R. Douglass  
Wilma Dowdell  
Alice Downs  
Robert Drapkin  
Thomas Dreier

Roger A. Dunn  
C. Robert Durden\*  
Richard Eliason  
Aila Erman  
Richard Farber  
Susan J. Fearnley  
Peter E. Field  
Vicki Fox  
Rada N. Fredrikson  
Hal Freedman  
Jerelyn Fyvolent  
Louise Gallagher  
John T. Garrigues  
Louise G. Garrigues  
Adele Gilbert  
Gordon J. Gilbert  
Helen Glaser  
Jean Gollay  
Seymour A. Gordon  
Susan S. Gordon  
Patrick R. Green  
Lawrence Green  
Freda Hack  
Royce G. Haiman  
Estelle Halle  
Charles Henderson  
Stephen Herman  
Bettina Herman  
Irwin Hersey  
Marcia Hersey  
Susan Hicks  
Mack Hicks  
Liliana Hodges  
Laura Hollar  
Hazel Hough  
William R. Hough  
Lois D. Howrigan  
Mardi I. Johnson  
Helen Jones  
Judith Jourdan  
Loveda Keating  
Camilla D. Kilgrove  
Alan P. Kloman  
Catharine Knapp  
Webster B. Knight  
Hanna Koch  
Frederic C. Koester  
Robert Kokol  
Odette Leary

Galatea Lebus  
Katherine Warmington Lewis  
Irene Lewis  
Jacqueline Ley Brown  
Terry P. Loebel  
Fay Mackey  
Charles Mackey  
Dorothy Mais  
Joan R. Malone\*  
Mary Joan Mann\*  
Sam H. Mann\*  
Ruth Marcus  
Luther Martin  
Christine Mathews  
Mary Alice McClendon  
Sally M. McConnell  
Sonya Miller  
Dav Mosby  
Glenn Mosby  
Mary Murdock  
F. Barbara Niemczycki  
Josephine O'Brien  
Richard Oliver  
Meta Osborn  
Beverly Pankonie  
Wayne Parrish  
Bonnie Peavy  
Richard E. Perry  
Mary B. Perry  
Stephen Peters  
Eric Lang Peterson  
G. J. Phillips  
Jacquelyn Piper  
Harry M. Piper  
Eugene R. Ponessa  
Margaret S. Ponessa  
Stephen Poohar  
Marie Potvin  
John H. Proctor  
John Ptacek  
Stephanie Puffer  
Lorraine Rahall  
Sam G. Rahall  
Zaida Ramseur  
Mary Adeline Reddick  
Margaret Rigg  
Anni Rocke  
Jean Rosborough  
Robert J. Rosen

Sam Ross  
T. Marshall Rousseau  
Marilyn A. Ruga  
Ottillie Runyon  
E. Stan Salzer  
Iris W. Salzer  
Neil W. Savage  
Susan Savage  
Neil W. Savage  
John E. Schloder  
Ruth Seabury  
Charlotte Searle  
Candace S. Sharp  
Peter Sherman  
Starr C. Sherman  
Frederick Shuh  
Mary L. Shuh  
Martha A. Smith  
Zelda Smith  
Bill Smith  
Mirella Smith  
Norman Smith  
Herb Snitzer  
Anne L. Soehl  
Julia Sorbo  
Eugene Sorbo  
Mildred Spelman  
Gladys Starling  
Ellen C. Stavros  
Kathryn Stenquist  
D. N. Stern  
Helen Stevenson  
Robert Stewart  
Dorothy Elizabeth Stovall  
Carmen P. Stover  
Kathleen D. Stover  
William H. Stover  
James Studdiford  
Suzanne Sutker  
James G. Sweeny  
Martha M. Sweeny  
Herb Tempelmann  
Sheila Tempelmann  
Cary Bond Thomas  
Stephen Thomas  
Helen Torres  
Clare Trice  
Mary Trice  
Earnest Truby

Sally Truby  
Phyllis E. Truitt Trust  
Carol A. Upham  
Burk Uzzle  
Janet Van Dellen  
Lana Van Galder  
Gertrude Van Vleet  
Calvin Vary  
Michele Vogel  
Anne von Rosenstiel  
Betty Wagner  
Pearl S. Walker  
Louise B. Weaver  
Jane H. Weber Trust\*  
Dr. Rudolph G. Weihe  
Marie C. Weir  
Herbert Weisinger  
Louise Wenzel  
Richard Wiest  
Marie Geraldine Williams  
Phyllis Stover Williams  
Mary O. Wilson  
Geraldine L. Wilson  
Kathleen Wish  
Steve Woodrough  
Margo Woodrough  
Margaret W. Word  
Phyllis A. Zarnas  
Roger Zeh  
William K. Zewadski

\* Bequest realized

# WAYS OF GIVING

## OUTRIGHT GIFTS

Outright gifts can include cash, appreciated property, gifts of art or other tangible personal property. All cash gifts are 100% tax deductible.

## GIFTS OF SECURITIES

By giving appreciated securities to the Museum, donors may avoid paying capital gains tax and receive a tax deduction for the fair market value of the gifts. For details on the transfer of stocks, please contact the Development Office.

## GIFTS OF REAL ESTATE

Real property can be deeded to the Museum and may warrant a sizeable tax deduction now while continuing to occupy the property for life. Your personal tax advisor may be able to help you select the best arrangement to suit your individual situation.

## PLANNED GIFTS

Planned gifts such as a charitable remainder trusts, charitable lead trusts, retained life estates, retirement plan designations, life insurance designations, or bequests may reduce inheritance taxes and benefit the Museum. Check with your financial advisor for the best plan, and let us know of your intent so we can recognize you as a member of our Legacy Society.

## NAMING OPPORTUNITIES

In recognition of leadership gifts, there are naming opportunities throughout the museum's main building, and the Hazel Hough Wing. Learn more about the naming opportunities by contacting the Development Office.

## MATCHING GIFTS

Many businesses will match an employee contribution, effectively doubling or sometimes tripling the impact of your donation. Check with your company's personnel office for more information.



For more information about how you can support the MFA, please contact the Museum of Fine Arts Development Office (727) 896-2667 or visit [mfastpete.org/give](https://mfastpete.org/give).



# MFA

MUSEUM OF FINE ARTS  
ST. PETERSBURG

255 Beach Drive NE, St. Petersburg, FL 33701 | [mfastpete.org](http://mfastpete.org)   



This Annual Report acknowledges donations made to the Museum of Fine Arts during our 2016 fiscal year, January 1 through December 31. Gifts supporting today's operations and ensuring the Museum's future are vital to fulfilling our mission in the community. Every effort has been made to ensure accuracy. If an error is found, please notify the Development Office at (727) 896-2667 for our records to be amended.