

2018-2019 ANNUAL REPORT

MUSEUM OF FINE ARTS ST. PETERSBURG





MISSION STATEMENT

Our mission is to engage, educate and excite the community by collecting, exhibiting, and preserving works of art for the enjoyment of all.

VISION STATEMENT

The Museum of Fine Arts, St. Petersburg, Florida is the cultural leader of our community. Our comprehensive collection, exhibitions, and programs celebrate art and engage the diverse cultures and communities we serve.

VALUES

We value:

- Excellence and integrity in the Museum's stewardship
- Artistic creativity and cultural diversity
- Education and engagement
- Commitment and support of our community
- Accessibility and inclusiveness
- Best practices as an organization

CONTENTS



MESSAGE FROM THE EXECUTIVE DIRECTOR	2
FINANCIAL REPORTS	3
2018-2019 LEADERSHIP	
EXECUTIVE COMMITTEE	4
BOARD OF TRUSTEES	4
TRUSTEES EMERITI	4
MFA STAFF	4
SIGNIFICANT DIGITS	5
EXHIBITIONS	6-7
PROGRAMS	8
SPECIAL EVENTS	
DECK THE GREAT HALL	9
NYE@MFA	9
THE MARGARET ACHESON STUART SOCIETY	10
DONOR SPOTLIGHT	11
DONOR HONOR ROLL	12-13
GIFTS OF ART	14
CORPORATE AND COMMUNITY PARTNERS	15
DOCENTS	16
DOCENT SPOTLIGHT	17
MEMBERSHIP	18
SUPPORT GROUPS	
COLLECTORS CIRCLE	20
FRIENDS OF DECORATIVE ARTS	20
FRIENDS OF PHOTOGRAPHY	20
MARLY MUSIC SOCIETY	20
THE CONTEMPORARIES	20
MEMORIALS AND TRIBUTES	22
LEGACY SOCIETY	23
WAYS OF GIVING	24

A MESSAGE FROM THE EXECUTIVE DIRECTOR



Each year, it is my honor and privilege to share the overall impact of your investment in the Museum of Fine Arts, St. Petersburg. This report shares our activities of the past year and celebrates the results of your generosity.

Over the course of the 2018-2019 fiscal year, the MFA welcomed more than 136,000 visitors who experienced 15 different exhibitions and several hundred public programs. Every activity, from installation of art to docent training to guest speakers, is made possible by contributions as our primary source of revenue. It is you, our donors, members, and sponsors, who help bring new ideas, fresh perspectives, and—for those of us living in St. Petersburg—a sense of civic pride in the amazing cultural opportunities we share.

This year has combined familiar traditions, such as exhibition openings, with new events, including a free community holiday open house and a New Year's Eve celebration in the heart of our vibrant downtown. As the first and largest collecting art museum in Tampa Bay, we continue to find ways to engage, educate, and excite the community. Whether exhibiting ancient mosaics from Antioch or self-taught artists from contemporary America, we seek to connect each visitor to stories from across time and around the world. In this way, we bring individuals together and learn we are so much more alike than we are different. Art is a shared experience.

For the fourth consecutive year, we were named “Best Museum Exhibit” and “Best Museum Store” by Tampa Bay Magazine, among many similar accolades for our quality of programming. We are grateful for such recognition and honored to be known as the center of art and culture in St. Petersburg. We appreciate the meaningful intersections we have with individuals, corporations, and community partners who advance our mission to celebrate art and engage the diverse communities we serve.

We are sustained by generous donors like you. We thank those included in this report who make everything we do at the Museum of Fine Arts possible, and we can't wait for you to see the impact you will make in 2019-2020.

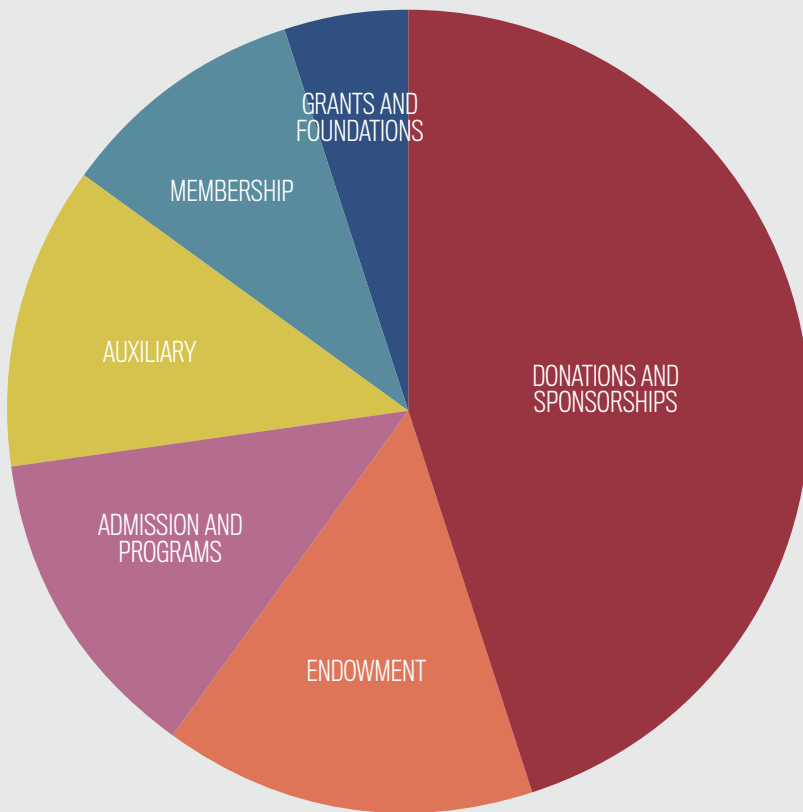
With gratitude,

Kristen A. Shepherd

Kristen A. Shepherd
Executive Director

FINANCIAL REPORTS

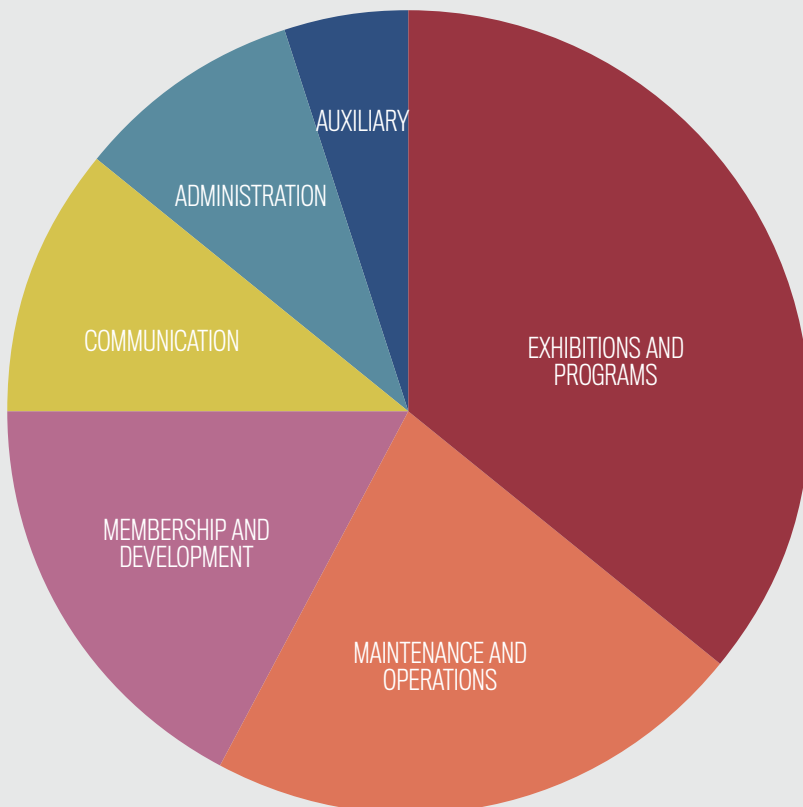
Operating Income Statement*



2018-2019 REVENUE

DONATIONS AND SPONSORSHIPS	\$2,058,615	44%
ENDOWMENT	\$889,179	19%
ADMISSION AND PROGRAMS	\$626,294	14%
AUXILIARY	\$561,935	12%
MEMBERSHIP	\$413,348	9%
GRANTS AND FOUNDATIONS	\$95,189	2%

TOTAL REVENUE **\$4,644,560*** **100%**



2018-2019 EXPENSE

EXHIBITIONS AND PROGRAMS	\$1,744,759	36%
MAINTENANCE AND OPERATIONS	\$1,079,896	22%
ADMINISTRATION	\$814,124	17%
COMMUNICATION	\$518,077	11%
MEMBERSHIP AND DEVELOPMENT	\$447,634	9%
AUXILIARY	\$245,598	5%

TOTAL EXPENSE **\$4,850,088*** **100%**

*unaudited

2018-2019 LEADERSHIP

EXECUTIVE COMMITTEE

Cathy Collins, Chairman
Fred Razook, Vice-Chairman
Craig Sher, Treasurer
Jim Gillespie, Secretary
George Baxter
Ward Curtis
Kristen A. Shepherd, ex officio

BOARD OF TRUSTEES

Laura Bryant
Dimity Carlson
Timothy Coop
Emily Elwyn
Chloe Firebaugh, ex officio
Wayne Fraser
Gordon Gilbert
Troy Holland
Richard Kriseman, ex officio
Ya La'ford
Fay Mackey
Glenn Mosby
Patti Novack
James Reichert
Ellen Stavros
Scott Wagman

TRUSTEES EMERITI

Seymour Gordon
Hazel Hough
Carol Upham

MFA STAFF

Kristen A. Shepherd, Executive Director

ADMINISTRATION

Diana Waters, Chief Financial Officer
Vicki Sofranko, Executive Assistant
Jorge Vidal, Manager of Special Projects

ADMISSIONS AND VISITOR SERVICES

Billy Summer, Manager of Visitor Services & Group Tours

CURATORIAL DEPARTMENT

Stanton Thomas, PhD, Curator of Collections & Exhibitions
Michael Bennett, PhD, Senior Curator of Early Western Art
Katherine Pill, Curator of Contemporary Art
Bridget Bryson, Manager of Curatorial Affairs & Communications
Amanda Robinson, Registrar
Erin Wilson, Curatorial & Registration Assistant
Stephanie Chill, Curatorial Assistant
Meghan Maloney, Registration Assistant
Jorge Valenzuela, Preparator
Eric Sarbach, Preparator

DEVELOPMENT AND MEMBERSHIP

Daryl DeBerry, Director of Development
Kimberly Finn, Manager of Member Services
Mikeesha Means, Manager of Individual Giving
Kelsey Oswald, Development Coordinator
Jennifer Posey, Membership & Volunteer Coordinator

MARKETING & PUBLIC RELATIONS

Julie A. Wilson, Director of Marketing & Communications
Lashonda Curry, Manager of Communications & Public Relations

THE MFA STORE

Audrie Rañon, Director of Retail Operations
Jeff Surrena, Assistant Store Manager

OPERATIONS

J.P. Fatseas, Director of Operations
Michael Pippen, AV and Event Support Coordinator
Damian Piekarski, Facilities Associate
Angela Warren, Event Coordinator

PUBLIC PROGRAMS

Margaret Murray, Associate Curator of Public Programs
Kimberlynn Martin, Manager of Education & Youth Programs



As of June 30, 2019

SIGNIFICANT DIGITS

22

Family Programs

228

attendees

12

support group events

584

attendees

83

school group tours

7,879

students

7

Music Programs

1,331

attendees

10

curatorial highlight events

140

attendees

67

adult group tours

1,449

participants

30

Lectures and Workshops

758

attendees

15

special exhibitions

3,549

member households

8%

increase from start of year

24

programs free for members

3,899

attendees

~560

artists exhibited

31

full-time employees

12

part-time employees

6

discounted programs for members

486

attendees

13

works from our collection traveled to

6

cities around the nation

60

weddings

3

community events more than

4,770

attendees

82

acquisitions

26,700

Facebook and Instagram followers

26%

increase from start of year



90,000
Honeybees

202,141

unique website visitors

EXHIBITIONS

The Museum's 27 collection galleries are complemented by special exhibitions each year. A total of 15 unique exhibitions illustrated a broad range of comprehensive, educational and diversely represented art and artists. Our diverse and compelling exhibitions offered new ways of seeing art, from a contemporary photography exhibition focusing on modes of self-portraiture to a dazzling jewelry exhibition that brought the work of Jean Schlumberger to life.

KEEPING TIME: THE ART OF CLOCKS AND WATCHES

JULY 21 – NOVEMBER 11, 2018

Ranging from personal to utilitarian, from traditional to visionary, and from luxurious to practical, this exhibition brought together objects from the museum's holdings and local private collections that embodied the delicate technology and craft of clock- and watch-making.

THIS IS NOT A SELFIE: PHOTOGRAPHIC SELF-PORTRAITS FROM THE AUDREY AND SYDNEY IRMAS COLLECTION

AUGUST 25 – NOVEMBER 25, 2018

This is Not a Selfie offered a compelling look at the primacy and variety of expressions within self-portraiture from the vantage of the current "Age of the Selfie." This exhibition featured interactive stations and artists who expanded the domains of self-portraiture by blurring the distinction between reality and fantasy, artifice and authenticity, and public and private imagery.

RECENT ACQUISITIONS: PAINTINGS, CERAMICS AND WORKS ON PAPER

SEPTEMBER 8 – DECEMBER 30, 2018

From the ancient world to present, the objects included in *Recent Acquisitions* exemplified the diversity of the MFA's collection and our commitment to engaging, educating, and exciting the community through the generosity of both new and established art donors.

SYD SOLOMON: VIEWS FROM ABOVE

SEPTEMBER 29, 2018 – JANUARY 27, 2019

This artist spotlight exhibition, presented in the Lee Malone Gallery, brought together works spanning from 1945 to the 1980s, drawn from the Museum collection as well as the estate of Syd Solomon, which also loaned archival images and publications.

FAIRYLAND LUSTRE: THE DARKLY MAGICAL WORLD OF DAISY MAKEIG-JONES

NOVEMBER 17, 2018 – AUGUST 11, 2019

Daisy Makeig-Jones' designs—from simple scenes of dragons and pixies to complex compositions of ghosts, goblins, and ghouls—transformed the simple shapes of Wedgwood wares. This exhibition explored the rise and decline of these startling and beautiful creations, and offered a closer look at some of the most magical pieces ever produced by Wedgwood.

DRAWN TO BEAUTY: THE ART AND ATELIER OF JEAN SCHLUMBERGER

DECEMBER 15, 2018 – MARCH 10, 2019

Drawn to Beauty, the first exhibition to explore Jean Schlumberger's life and artistic process, considered the designer's work through three interrelated themes: his formative years in pre-World War II Paris; the efflorescence of his mature style in New York City as related to the natural world; and his career as associated with his friends and patrons—the stars, socialites, and butterflies of the Jet-Set 60s and 70s.



JEWELS OF THE IMAGINATION: RADIANT MASTERWORKS BY JEAN SCHLUMBERGER FROM THE MELLON COLLECTION

DECEMBER 15, 2018 – MARCH 31, 2019

This exhibition featured the extensive Jean Schlumberger collection of Rachel Lambert "Bunny" Mellon, the largest, most comprehensive public collection of Schlumberger's work in the world. *Jewels of the Imagination* highlighted the work of this innovative artist, placing his jewelry and *objets d'art* as inimitable examples of twentieth-century design.

GLOW: THE HAND PAINTED PHOTOGRAPHS OF E.G. BARNHILL

JANUARY 12 – APRIL 7, 2019

The hand-painted photographs of E. G. Barnhill (1894–1987) from our MFA collection offered a unique voyage into the natural splendors of Florida during the early part of the twentieth century. The exhibition consisted of historically framed, hand-painted glass plates.

EXHIBITIONS

VIEWS OF ANTIQUITY: SHAPING THE CLASSICAL IDEAL

FEBRUARY 16 – MAY 5, 2019

Views of Antiquity examined classical antiquity from three distinct vantage points: ancient sites; iconic masterpieces in museum collections; and perspectives of modern photographers. This exhibition drew heavily from the Museum's expansive collections of nineteenth century photographs of classical sites and classical sculptures.



A FEAST FOR THE EYES: EUROPEAN MASTERPIECES FROM THE GRASSET COLLECTION

MARCH 23 – SEPTEMBER 2, 2019

A Feast for the Eyes featured 40 superb Old Master paintings from the 17th and 18th centuries by major Italian, Spanish, German, and Netherlandish artists. This exhibition included a wide variety of themes, such as sumptuous flower still lifes, splendid banquet scenes, seascapes, European urban scenes and genre scenes. The Grasset family generously offered the MFA a three-year extended loan of their incredible and rare collection.

VISUAL METAPHOR: HIGH SCHOOL STUDENT EXHIBITION

APRIL 13 – MAY 12, 2019

THEO WUJCIK: CANTOS

APRIL 13 – JUNE 2, 2019

One of Tampa Bay's best-known artists, Theo Wujcik (1936-2014), spent a decade creating a series drawn from the dark and profound literary classic, *Dante's Inferno*. Those extraordinary paintings were the theme for *Theo Wujcik: Cantos*.

LITERARY CAROUSEL: PART OF THE SUNLIT FESTIVAL

MAY 11 – AUGUST 11, 2019

Literary Carousel, a special event held in partnership with Keep St. Pete Lit, pairs local writers with selected photos from the photographic collection at the MFA. The hand-picked images inspired prose, poetry, and their literary counterparts.

STRAIGHTEN UP THE WORLD: SELF-TAUGHT ART FROM THE COLLECTION OF THE MUSEUM OF FINE ARTS

MAY 18 – OCTOBER 27, 2019

Straighten up the World brought together works drawn from the MFA Collection donated by Martha and Jim Sweeny. The selections illustrated the prowess and innovation stemming from self-taught artistic practices from the American South and focused on increasing representation of women artists and artists of color in the MFA's collection.

ABOVE THE FOLD: NEW EXPRESSIONS IN ORIGAMI

JUNE 22 – SEPTEMBER 22, 2019

Featuring nine artists from seven different countries, *Above the Fold* demonstrated the extraordinary power and potential of contemporary origami. Paper is transformed into breathtaking sculpture, large-scale installations, and conceptual works that express contemporary social, political, and aesthetic ideas.

This high caliber of exhibitions is made possible through the generosity of sponsors and underwriters. A very special expression of gratitude goes to **Joanne and Bill Edwards, Marianne and Mark Mahaffey, and Penny and Jeff Vinik** for their exceptional commitments to multiple exhibitions.

City of St. Petersburg
Crown Automotive Group
DMG School Project
Ann and William Edwards
Gobioff Foundation
Hennessy Construction Services

Gerard B. Lambert Foundation
Lightning Foundation
Helen and Richard Minck
Memorial Foundation
Pinellas County Schools
Janna and Timothy Ranney

Sabal Trust Company
State of Florida, Division of
Cultural Affairs
The Margaret Acheson Stuart Society

PROGRAMS

The MFA hosts over 200 public programs each year. Included in this number are several recurring programs that regularly highlight either our MFA collection or the current special exhibitions. Programs such as Coffee Talk, Cinema @ the MFA, Cocktails and Collections, Painting in the Park, and our Marly Music series attract new audiences as we celebrate the quality of our exhibitions. Our programs enable our community to engage with the museum in new and meaningful ways.

We introduce over 25,000 students each year to the arts through our partnership with Pinellas County Schools. In addition to serving our youth and family audiences, we are designing programs for adults that continue to surprise and delight, such as our Zombie Thriller Dance, Simmer and Sift series, and lectures series of gallery spotlights and intimate garden conversations in *Back to the Future with Dr. Michael Bennett*.

One initiative is a new program designed for people living with memory disorder and their care partners. After a year of extensive research surveying other museum programs and meeting with leading voices in the field, the MFA is planning to launch this new program in fall 2020. Thank you to the contributors listed below who sponsored our public programs in the 2019 fiscal year:

AARP Florida

Bank of America | Museums on Us

City of St. Petersburg Office of Cultural Affairs

Community Foundation of Tampa Bay

Cowles Trust

Green, Henwood & Hough Investment Group

Hough Family Foundation

Kane's Furniture

Pinellas Community Foundation

RBC Foundation

St. Petersburg/Clearwater Film Commission

Suncoast Credit Union

Tampa Bay Rays Foundation

Wells Fargo Private Bank

Westminster Communities of St. Petersburg

Westminster Palms



SPECIAL EVENTS



DECK THE GREAT HALL

Amidst the holiday season, the MFA began a new tradition with its first Deck the Great Hall community open house on November 29, 2018. Sponsored by The Margaret Acheson Stuart Society, this special event was a free public tree-lighting with a commissioned artist who created an original, site-specific work of art for our annual holiday tree placed in the Great Hall. Artist Dominique Labauvie's installation this year was anchored by the familiar form of the holly leaf, a symbol of life and protection across many cultures for centuries. More than 700 individuals were able to enjoy the MFA collection, live music, and refreshments after viewing our beautiful holiday decor. We hope this will become a treasured and exciting tradition at the MFA, and we are so grateful to the Stuart Society for their support this inaugural year.

As St. Petersburg's first and only comprehensive museum, the MFA has a special role in bringing our community together. We will continue to celebrate the diversity of cultures and share another joyful gathering this holiday season.



NYE@MFA

With prime viewing of the downtown fireworks, close to 300 guests rang in the New Year with an all-inclusive evening featuring entertainment by Paul Wilborn and the Blue Roses, a gourmet seated dinner, unique dessert stations, open bar, dancing, midnight champagne toasts, and access to the MFA special exhibition galleries.

Thank you to the sponsors and underwriters who made the inaugural NYE@MFA a night to remember:

Dr. Dimity and Mark Carlson
Deann and Tim Coop
Charles Schwab Corporation
Cathy and Steve Collins
Diane Fair
Hancock Whitney Bank
Majeed Family Foundation
Glenn and Dav Mosby
PurePoint Financial
Shumaker, Loop & Kendrick

THE MARGARET ACHESON STUART SOCIETY

Bearing our founder's name, The Margaret Acheson Stuart Society is a non-profit volunteer organization and a major donor for the Museum. This all-volunteer group comprised of over 400 dedicated members honor Mrs. Stuart with their outstanding generosity and diligent efforts throughout the year to ensure the Museum remains the premier arts destination in St. Petersburg.

The Stuart Society committees host signature events each year with 6,788 volunteer hours that all expand upon the mission of the Museum. This includes Wine Weekend, Art in Bloom, SmARTly Dressed and Affaires d'Art. Proceeds are presented to the MFA in May at the final Stuart Society general membership meeting of the fiscal year. The Museum is deeply grateful to The Stuart Society for successfully promoting the welfare of the Museum, stimulating public interest, and participating in Museum activities.

Thank you to the Margaret Acheson Stuart Society leadership in the 2018-2019 fiscal year and the past presidents pictured below:



BOARD OF DIRECTORS

EXECUTIVE BOARD OFFICERS

Chloe Firebaugh, President
Candy Scherer Sharp, President-Elect
Pam Hatton, Membership Vice President
Elise Minkoff, Communications Vice President
Rita Peters, Recording Secretary
Loretta Stitt, Corresponding Secretary
Sharon Gardner, Treasurer
Gail Phares, Parliamentarian

STANDING BOARD COMMITTEES

Leslie Trevathan-Rich, Digital Chair
Dawn Sumner, Membership Chair
Carol Fisher, Nominating Chair
Ria McQueen, Provisional Chair
Joann Barger, Ways and Means Chair

EVENT CHAIRS

Caroline Meers and Anne Engelbrecht, Affaires d' Art Co-Chairs
Joann Barger and Chloe Firebaugh, Art in Bloom Co-Chairs
Elise Minkoff and Joann Barger, Smartly Dressed Fashion Show Co-Chairs
Maggi McQueen and Gail Phares, Wine Weekend Co-Chairs



DONOR SPOTLIGHT

CLAUDIA MCCORKLE

Why is philanthropy important to you?

Philanthropy is GIVING. Giving makes the world a better place!

How did you first get involved at the MFA?

In 1979, upon moving to St. Petersburg, I hopped right over to the MFA. I was awed, instantly knew it was a gem.

What inspired you to support the MFA?

Repeated visits inspired me to support the MFA. When something calls, something really SPECIAL, one answers!

What advice would you give to future donors?

One mere visit to the MFA inspires. To donate is to stay inspired!

What do you most appreciate about the MFA?

The building, the location, the fabulous art are what I enjoy most about the museum. It is a sensory experience involving the human psyche and all sensibilities.

Moreover, all the fabulous educational/outreach programs are so enlightening! I am thrilled to have joined the Study Trip, November 12, to the Appleton Museum of Art, Ocala, Florida. I was able to experience the French Impressionism exhibit and enjoy the cuisine at a local French bistro. Ooh-la-la!



DONOR HONOR ROLL

Contributions comprise over 45% of the Museum's annual revenue. Outstanding exhibitions, related programming, and special events are made possible by the generosity of the individuals, corporations, foundations, and grants.

Thank you to our fiscal year 2018-2019 donors contributing \$250 or more between July 1, 2018 and June 30, 2019:

\$50,000 AND ABOVE

Joanne and Bill Edwards
Gerard B. Lambert Foundation
Hough Family Foundation
Marianne and Mark Mahaffey
Helen and Richard Minck
Memorial Foundation
Janna and Timothy Ranney
Sabal Trust Company
The Margaret Acheson Stuart Society
Penny and Jeff Vinik

\$25,000 TO \$49,999

AARP Florida
Anonymous
Bank of America
Crown Automotive Group
Dr. Richard and Mardie Eliason
Emily and Tash Elwyn
Hennessy Construction Services
Mary and Tom James

\$10,000 TO \$24,999

Anonymous
Deborah and George Baxter
Bay Surgical Specialists
Dr. Dimity and Mark Carlson
City of St. Petersburg
Cathy and Steve Collins
Barbara and Ward Curtis
Gerry and Allen Davidson
Chitranee and Dr. Robert Drapkin
The Robert Durden Family Fund
Ann and Bill Edwards
Focardi - Great Bay Foundation
Emily and James Gillespie
Gobioff Foundation
Dwayne Hawkins
Glenn and Dav Mosby
Patti and Irwin Novack
Rita and Stephen Peters
Pinellas Community Foundation
Jim Reichert
Westminster Communities of
St. Petersburg

\$5,000 TO \$9,999

Hicham Aboutaam
The Cantonis Family Foundation
Sue Ann Carey
Deann and Tim Coop
Cowles Charitable Trust
Joyce and Skipp Fraser
Dr. Gordon J. Gilbert and Michele Gilbert
Green, Henwood & Hough
Investment Group
Dr. Ilda Hall
Beth Houghton and Scott Wagman
Kane's Furniture
Toni and Kent Lydecker
Majeed Family Foundation
Judith and James Mitchell
Riverwalk Wealth Advisors | Matthew Lytell
Arlene Rothman
Iris Salzer
Julia Sorbo
St. Petersburg/Clearwater Film Commission
State of Florida, Division of Cultural Affairs
Suncoast Credit Union
Tiffany & Co.
Helen Torres Foundation

\$2,500 TO \$4,999

Anonymous
Cynthia Astrack
Kathy and Patrick Beyer
Thomas Brenner
Jacqueline and William Brown
Laura and Matt Bryant
Charles Schwab Corporation
Fields Galley Private Foundation
Susan and Seymour Gordon
Hancock Whitney Bank
Judith and Troy Holland
Institute of Vitality | Douglas Zimmerman
J. Crayton Pruitt Foundation
Lightning Foundation
Fay Mackey
Mary Alice McClendon
Claudia McCorkle
PurePoint Financial

Gail and Fred Razook
RBC Foundation
Carolyn and Frederick Rehberger
Nancy and Robert Shannon
Jan and Craig Sher
Shumaker, Loop & Kendrick
Ellen Stavros
Tampa Bay Rays Foundation
Dr. Susan M. Taylor
Wells Fargo Private Bank

\$1,500 TO \$2,499

Dr. Gene and Toni Altman
Lois and Marvin Atkins
Charlotte Bacon
Patricia Brant
Tina and Bob Douglass
Ellen Esteva
Sharon and Victor Gardner
Alice and David Hoffman
Kathleen Swann Brooks Family Foundation
Dr. Peter and Yvonne Pav
Kathleen and William Stover
Drs. Dorothy and Edwin Sved
Brenda Verbeck
Westminster Palms
Carole and Clem White

\$1,000 TO \$1,499

Anonymous (2)
Andi and Russ Barlow
Margaret Bowman
Doris Chapel and Charles Strub
Community Foundation of Tampa Bay
Hillary Cone
Barbara and Doug DeMaire
Beth and John England
Diane Fair
Cynthia Faulhaber
The Hon. Marion L. Fleming and
The Rev. Peter W. Fleming
Vicki and Frank Fox
Jan and Bill Haueisen
Susan and Mack Hicks
Susan and Robb Hough

DONOR HONOR ROLL

Karen Lang Johnston
Lynda and Dean Jollay
Joyce and Walter Larson
Deborah and Jim Long
Linda Meehan and Tom Brown
Anne and Robert Nelson
Dr. John E. Schloder and Terence Leet
The Honorable Mel and Mrs. Betty Sembler
Jean Wittner

\$250 TO \$999

Anonymous (3)
Margaret Strum Acheson Allesee
Erin and Bruce Aebel
Dr. Edward and Margaret Amley
Dale and Ronald Anderson
Marion and William Ballard
Verna Baughman
Andre Beaudry
Bonita Bellows
Marilyn and Philip Benjamin
Sherran Blair
Suzanne and Michael Bloom

Marion Class
Elizabeth Coerver
Janet Cook
Dorothy Cooper
M. Eleanor Davidov
Daryl DeBerry
Gary deBroekert
Muriel Desloovere
Carol and Justus Doenecke
Dana and Roger Dunn
Dr. James and Sunny Endicott
Aila Erman
Chloe Firebaugh
Dorothy and John Fischer
Laurel Greene
Royce Haiman
Donna and Jeff Hearn
Elly and John Hopkins
Sarah and Don Howe
Linda and Christopher Hugues
Christopher Lerbs
Helen Leslie
Nina and James Light
Kathryn and George Ludwig

Mary Ann and Bruce Marger
Paula May
Barbara and Fred McCoy
Jayne and Alan Mossberg
Sally Newbern
Scott Odening
Jerry Owen
Demi and Sam Rahall
Louise and Charles Reeves
T. Marshall Rousseau
Betsy Schweitzer
Ginny and Dennis Sexton
Mary Shuh
The SSL Store
Carol and Robert Stewart
Jane and Kurt Strasser
Robert Strickland
Sally Truby
Hugh and Keith Tulloch
Maureen Twombly
Mary Lou Warner
Sally and Louis Wheeler
Jane E. Wrynn
Dr. Michael and Leisa Zimmer

Among these donors are an exceptional group of individuals who make the Museum a personal philanthropic priority year after year. Their significant gifts made on an annual basis demonstrate a commitment worthy of special recognition. This 2018-2019 fiscal year report acknowledges our three circle levels already in place: **Director's Circle** at \$25,000, **Founder's Circle** at \$10,000 and **Patron's Circle** at \$5,000. A new giving circle will be added in the 2019-2020 fiscal year for donors contributing \$50,000 or more called the **Chairman's Circle**.

Membership in the Circle levels provides special access to Museum events and exhibitions. To add your name to this list, please call Manager of Individual Giving, Mikeesha Means, (727) 896-2667 Ext. 231.

DIRECTOR'S CIRCLE

Joanne and Bill Edwards
Dr. Richard Eliason and Mardie Eliason
Emily and Tash Elwyn
Hazel and William Hough
Mary and Tom James
Marianne and Mark Mahaffey
Janna and Timothy Ranney
Penny and Jeff Vinik

FOUNDER'S CIRCLE

Deborah and George Baxter
Dr. Dimity and Mark Carlson
Suki and John Carson
Cathy and Steve Collins
Barbara and Ward Curtis
Gerry and Allen Davidson
Ann and Bill Edwards
Emily and James Gillespie
Dwayne Hawkins
Glenn and Dav Mosby
Patti and Irwin Novack
Rita and Stephen Peters
Jim Reichert

PATRON'S CIRCLE

The Cantonis Family Foundation
Deann and Tim Coop
Joyce and Skipp Fraser
Dr. Gordon J. Gilbert and Michele Gilbert
Dr. Ilda Hall
Beth Houghton and Scott Wagman
Toni and Kent Lydecker
Judith and James Mitchell
Iris Salzer
Julia Sorbo

GIFTS OF ART

The MFA Collection is central to all we do and enables us to tell stories from all eras and cultures. Art donors help us tell these stories and we are deeply grateful for works accessioned in the 2018-2019 fiscal year. Multiple gifts are noted in parentheses.

Leanne Abadia

Anonymous (8)

Dr. Timothy Y.C. Choy Trust

George R. Ellis (7)

Peter Foe and Nora Armstrong (2)

Ed and Ann Gessen (15)

Elinor Gollay

Maura Haverly

Robb Hough (8)

Mary Alice McClendon (2)

David J. Patten (6)

Stewart Harvey and Bill Rhoades (4)

Joan and Daniel Rutenberg

Matthew Rutenberg

Ann Sahlman (8)

Iris Salzer (5)

Martha and Jim Sweeny

Anne von Rosenstiel (8)

William K. Zewadski

R.J. Kern (3)



CORPORATE & COMMUNITY PARTNERS

Organizations of all sizes and industries help to strengthen the arts and cultural community for residents and visitors alike by supporting the Museum of Fine Arts. Contributions from corporations, community partners, agencies and foundations help make the MFA's world-class exhibitions and public programs possible. We invite your company to become engaged with the Museum, our wide circle of supporters, and our diverse and broad audience as this list continues to grow.



Hough Family Foundation, Inc.



Bay Surgical Specialists

The Carlson Group

Charles Schwab & Company

Embrace the Arts Foundation

Focardi-Great Bay Foundation

Gobioff Foundation

Green, Henwood, and Hough Investment Group

Hancock Whitney Bank

Helen Torres Foundation

Institute of Vitality | Douglas Zimmerman

Kane's Furniture

Lightning Foundation

Pinellas Community Foundation

Premier Eye Care | Lorna Taylor

PurePoint Financial

Schumaker, Loop, & Kendrick, LLP

St. Petersburg/Clearwater Film Commission

Suncoast Credit Union

Tampa Bay Rays Foundation

Riverwalk Wealth Advisors | Matthew Lytell

Wells Fargo Private Bank

Westminster Communities of St. Petersburg Florida

"Sabal Trust was pleased to support the Museum of Fine Arts as the presenting sponsor for the *Jewels of Imagination: Radiant Masterworks by Jean Schlumberger from the Mellon Collection*. We believe that investing and partnership with the Museum of Fine Arts provides a significant opportunity and celebration for the entire community."

—Bryant Jones, President & CEO, Sabal Trust



DOCENTS

These special individuals are often the first introduction to art for a visitor at the Museum, as volunteer tour guides who lead engaging discussions about the MFA collection and special exhibitions. After completing training and research to learn and share their knowledge, including a singular group of docents who train specifically to adapt to a curriculum for our sixth grade program tours, this special group conducts more than 700 tours every year. MFA docents create welcoming and enjoyable experiences every day for our diverse and multigenerational audiences.

Thank you to our tour-giving docents. The year indicates their arrival in this role:

Lily Alcott, 2008
Shirley Barbel, 1982
Jacqueline Brown, 1999
Maxine Buccholtz, 2017
Maureen Connors, 2017
Alice Dasenbrock, 2017
Tina Douglass, 1996
Patricia Fain, 2007
Arthur Finegold, 2013
Susan Gordon, 2007
Seymour Gordon, 2007
Rita Gram, 2008
Ena Groff, 2008

Ken Habershon, 2017
Steve Hack, 2007
Victoria Hawley, 2013
Alice Hoffman, 2011
David Hoffman, 2011
Roberta Hosken, 1996
Helen Huntley, 2017
Camilla Kilgroe, 2008
Catherine Krell, 2007
Sue Lewis, 2007
Lee Linkous, 2017
Debbie Lopez, 2017
Sigrid Lovfald, 2011

Kathryn Ludwig, 2017
Debi Mazor, 2007
Karen McKenna, 2008
Mary Miller, 1992
Sheila Miller, 1989
Marian Moore, 2013
Glenn Mosby, 2013
Patti Novack, 1981
Mandy Peterson, 2011
Pona Pierkarski, 2017
Frank Purrelli, 2011
Carolyn Rehberger, 2003
Susan Rhein, 2011

Teddi Robbins, 1985
Judith Sauers, 1999
Cathleen Schott, 2017
Joyce Seder, 1985
Anne Shamas, 1980
Texann Smith, 2008
Ruth Spears, 2013
John Stewart, 2017
LaVonne Stimadorakis, 2013
Sheila Tempelmann, 1996
Susanne Ward, 2003
Marylee Zink, 2003



DOCENT SPOTLIGHT

ALICE AND DAVID HOFFMAN

Ten years ago, Alice and David Hoffman moved to Spring Hill from Brooklyn, New York, and have both been docents at the MFA since 2011.

What is most rewarding about being MFA docents?

The people! We get to meet a variety of people who are curious about art. It is so great to be able to enlighten someone and pique their interest. Not only do these visitors get to see and enjoy the Museum, they view art differently after we talk to them. Often, they also make observations that enhance our understanding of the objects in the collection.

How did you begin to get involved with the MFA?

David always wanted to be a docent at The Met in New York once he retired and Alice was equally interested. David was a high school social studies teacher for 30 years and, when possible, always included art in the curriculum to have his students better understand the culture they were studying.

But we ended up retiring in Florida, and we were thrilled to find the MFA. It is a wonderful museum with a fabulous collection. The docent classes we took were terrific and we met such nice people. We also enjoy being able to convey our love of art to the many visitors to the MFA,

What would you say to someone who has never been to the MFA?

Come open to new experiences and leave yourself open. Be sure to visit again because one time is not enough. These guests come to the MFA with a wealth of experience from different places that open them up to be able to learn so much more. The MFA has a great overview as a comprehensive museum so people can learn even more. Visiting the collection is way of understanding art from around the world and the cultures that produce it.

We participate in the MFA's wonderful sixth-grade program. It is great to introduce the treasures of the museum to many youngsters in Pinellas County who have never been to the MFA. The program also offers family passes to the students. This way they can return, bring new people into the museum, and they can be the docent to their families.

Which exhibition or artwork has been your favorite and why?

It is impossible to pick just one work in the permanent collection—it is so varied and filled with so many wonderful objects. The new addition of the Head of Dionysus [on loan through the next five years] and all that Dr. Michael Bennett is planning to do to expand our antiquities collection is amazing. We are looking forward to the Antioch exhibit planned.

The same holds for the short-term exhibitions. There have been so many fabulous shows. The current exhibitions are tremendous and very exciting. We love *Straighten up the World: Self-taught Art from the Collection of the Museum of Fine Arts*. These works have a vitality that is just wonderful and help expand visitors' understand of art. And, of course, the recent Jean Schlumberger/Bunny Mellon jewelry show was spectacular.



MEMBERSHIP

Membership at the Museum of Fine Arts offers unique benefits that enrich our members' museum experience, and provides valuable support for the MFA's mission and strategic priorities. Membership dues help fund over a dozen special exhibitions, and hundreds of educational arts-related programs and events each year.

Members have made it possible to fulfill our mission since we first opened to the public in 1965. During the 2019 fiscal year 3,549 members supported the Museum.

The MFA gratefully acknowledges those generous members who provided additional philanthropic support through membership at the Sustainer and Advocate levels:

ADVOCATE

\$2,500

Elizabeth Dimmit and Piers Davies
Sunny and James Endicott
Sue and Roger Thrun
Carol and Frederick Vance

SUSTAINER

\$1,250

Toni and Gene Altman
Laura Ashby and William Moody
Pamela Bristol and Gerald Odening
Sharon and Randal Cochrane
Gary deBroekert
George R. Ellis
Beth and John England
Helen and David Feinberg
Susan and Mack Hicks
Natalie Judge
Karen and Eugene Johnston
Gerald Langlykke
Suzanne and James MacDougald
Barbara and Fred McCoy
Linda Meehan and Tom Brown
Demi and Sam Rahall
Marianne and Joseph Sabadish
Mary Shuh
Susana and Yann Weymouth
Jean Wittner





SUPPORT GROUPS

The MFA has five support groups that operate to advance the Museum's mission. From an annual gala to a *Dante's Inferno* themed dance party, these groups build and maintain the permanent collection while creating excitement about the Museum.

COLLECTORS CIRCLE

Cynthia Astrack, President

Dr. Dimity Carlson and Dr. Susan M. Taylor,
Gala Co-Chairs

Kathy Beyer and Chitraneer Drapkin,
Jazz Brunch Co-Chairs

The Collectors Circle serves to enhance the Museum's collection through a variety of activities, including international and domestic study trips with visits to galleries, museums, and private collections. This year, the Collectors Circle visited Tarpon Springs and New Orleans on study trips, and elected to conserve two remarkable works in the MFA Collection at the Collectors Choice XVIII Gala: *The Medici Flower Still Life Panel* and John La Farge's *Tree Peonies Window*. Additionally, an anonymous donor came forward to allow the Museum to purchase the *St. Ghislain in a Landscape* Old Master painting.

FRIENDS OF DECORATIVE ARTS

Carolyn Nygren, President

The Friends of Decorative Arts expand understanding of the variety and beauty of fine furniture, jewelry, ceramics and glass as an integral part of the MFA's collection. This group meets September through May for programming on acquisitions, exhibitions, lectures, and symposia.

FRIENDS OF PHOTOGRAPHY

Carol Upham, President

The Friends of Photography are dedicated to increasing public awareness of the fine art of photography through lectures, events, and workshops. Members help promote the Museum's photography collection, which is recognized as one of the finest in the Southeast.



MARLY MUSIC SOCIETY

Dick Eliason and Ginny Diedrich, Co-Chairs

The Marly Music Society brings in live music performances at the MFA each year. This group operates in the summer at the close of one fiscal year and the beginning of another. Performances in the 2018-2019 fiscal year included Israeli-American pianist Yael Weiss presenting "32 Bright Clouds," jazz pianist and Juilliard School graduate, Aaron Diehl, and the sold-out performances of classical guitarist Jason Vieaux, Tesla Quartet and artists and mathematicians Martin and Erik Demaine and jazz pianist John C. O'Leary III.

THE CONTEMPORARIES

Kurt Piazza, President

The Contemporaries was formed to build engagement among contemporary art enthusiasts with the Museum of Fine Art's diverse programming, with a focus on supporting contemporary artists and exhibitions at the MFA. The educational meets the social at The Contemporaries' events, encouraging the collection of contemporary art, and supporting local galleries and artists.

SUPPORT GROUPS



Thank you to the donors who supported activities within these groups:

Anonymous

Cynthia Astrack

Bay Surgical Specialists

Kathy and Patrick Beyer

Jacqueline and William Brown

Dr. Dimity and Mark Carlson

Hillary Cone

Chitrane and Dr. Robert L. Drapkin

Ann and William Edwards

Susan and Mack Hicks

Institute of Vitality | Douglas Zimmerman

Marianne and Mark Mahaffey

Mary Alice McClendon

Barbara and Fred McCoy

Riverwalk Wealth Advisors | Matthew Lytell

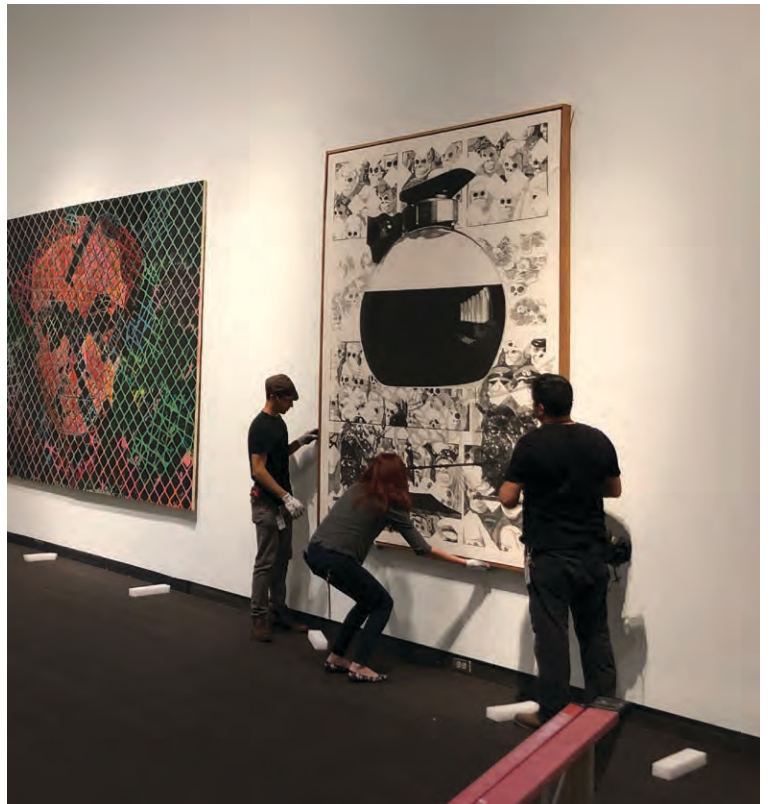
Mary Shuh

The SSL Store

Dr. Susan M. Taylor

Helen Torres Foundation

Westminster Palms



MEMORIALS AND TRIBUTES

Memorial and tribute gifts are significant to the Museum and a special tribute to the honoree. In honoring another, you are making a lasting investment that allows the Museum to present more diverse exhibitions and public programs that help serve the MFA's mission. The list below acknowledges both the donor and their honoree:

IN HONOR OF CYNTHIA ASTRACK

Hillary Cone

IN HONOR OF JOANN BARGER

Dimity Carlson

IN MEMORY OF CARY BOND

Mariel and Eric Karlin
Barbara and Frederic McCoy
Cyndie and Russ Schmeiser
Elsa Sloss
Lisa and Peter Wells

IN MEMORY OF SMELIA DAMJANOVICH

Barclay Estates Social Club

IN HONOR OF DARYL DEBERRY

Kristine Dartnall
Linda Davis
Cynthia Kirby
Tina Robinson

IN HONOR OF CHITRANEE AND DR. ROBERT L. DRAPKIN

Betsy Schweitzer

IN MEMORY OF NINA FOCARDI

Focardi - Great Bay Foundation

IN HONOR OF ROYCE HAIMAN

Ann Shelton

IN MEMORY OF W. LANGSTON HOLLAND, SR.

Shirley Boggs

IN HONOR OF ELISE MINKOFF

Dimity Carlson

IN MEMORY OF JAMES E. MORTENSEN

Brenda Verbeck

IN MEMORY OF FRANCES PARSONS

Aleta and Frederick Fisher
Dr. John and Louise Garrigues
Joan Jaicks
Ellen Parham
Clare Raymond
Mozelle Sawyer Bell
Robert Strickland

IN MEMORY CHARLES PARSONS

Robert Strickland

IN MEMORY OF MARY PERRY

Jacqueline Brown
Dana and Roger Dunn
Dr. Gordon J. Gilbert and Michele Gilbert
Susan and Mack Hicks
Ruth and Lewis Kent
Mary Alice McClendon
Dr. John E. Schloder

IN MEMORY OF SHELDON ROTHMAN

Helen Hameroff and Frantz Christensen

IN HONOR OF KRISTEN A. SHEPHERD

Arthur and Henry Denner
Judith and James Mitchell

IN HONOR OF JOHN STEWART

Anonymous

IN MEMORY OF LYNN STRICKLAND

Robert Strickland

IN HONOR OF MARTHA AND JIM SWEENEY

M. Eleonor Davidov

IN MEMORY OF MARTHA SWEENEY

Barbara Goss
Barbara Parr
Dr. John E. Schloder

IN MEMORY OF STEPHEN THOMAS

Sara Galiger
Joan Jaicks
Sally and Scott Newbern
Patty Ann Hamblen and the OHP
Wealth Management Team
Rita and Stephen Peters
Mozelle Sawyer Bell
Dr. John E. Schloder
Donna Sherf
Sydni Shollenberger
Norma and Donn Spegal
Sheila Tempelmann

IN HONOR OF JORGE VIDAL

Judy Klein



LEGACY SOCIETY

Legacy Society members have included the Museum in their estate plans. Legacy gifts help maintain resources for the future and ensure that visitors for generations to come will be able to enjoy the MFA. Thank you to the following MFA Legacy Society Members:

Margaret Amley	Wilma Dowdell	Camilla Kilgroe	John Proctor	James Studdiford
Dr. Edward Amley	Alice Downs	Diana King	John Ptacek	Suzanne Sutker
Jim Amrhein	Dr. Robert Drapkin	Alan Kloman	Stephanie Puffer	James Sweeny
Mark Anderson	Chitrane Drapkin	Catharine Knapp	Lorraine Rahall	Martha Sweeny
Lewis Andrews	Thomas Dreier	Webster Knight	Sam Rahall	Carl Tandberg
Cynthia Astrack	Robert Durden	Barbara Knight	Zaida Ramseur	Herb Tempelmann
Alexander Astrack	Dr. Richard Eliason	Hanna Koch	Mary Reddick	Sheila Tempelmann
Dr. Susan Beaven	Aila Erman	Frederic Koester	James Reichert	Stephen Thomas
Elizabeth Belting	Richard Farber	Rudolph Kohler	Margaret Rigg	Cary Bond Thomas
Robert Bennett	Susan Fearnley	Robert Kokol	Anni Rocke	Nancy Thomas
Dr. Robert Bianchi	Peter Field	Beth Kokol	Robert Rosen	Helen Torres
Anna Bianchi	Vicki Fox	Odette Leary	Sam Ross	Rebecca Townsend
Louise Bishop	Frank Fox	Irene Lewis	T. Marshall Rousseau	Mary Trice
Vance Bishop	Rada Fredrikson	Katherine Lewis	Marilyn Ruga	Clare Trice
Isabel Bishop	Hal Freedman	Terry Loebel	Otilie Runyon	Sally Truby
Emily Bizjak	Jerelyn Fyvolent	Maxine MacDonald	Stan Salzer	Earnest Truby
Hazel Blair*	Louise Gallagher	Fay Mackey	Iris Salzer	Phyllis Truitt*
Geraldine Blazey	Dr. John Garrigues, Jr.	Charles Mackey	Susan Savage	Carol A. Upham
Robert Blazey	Louise Garrigues	Dorothy Mais	Neil Savage	Burk Uzzle
Anne Bleakley	Adele Gilbert	Joan Malone	Dr. John Schloder	Janet Van Dellen
Barbara Boger	Dr. Gordon Gilbert	Mary Joan Mann	Ruth Seabury	Lana Van Galder
Elizabeth Bohlman	Michele Gilbert	Sam Mann	Charlotte Searle	Gertrude Van Vleet
Clara Boldt	Helen Glaser	Luther Martin	Candace Sharp	Calvin Vary
Rex Brasell	Jean Gollay	Mary Alice McClendon	Starr Sherman	Marjorie Vary
William Brown	Elinor Gollay	Sally McConnell	Peter Sherman	Michele Vogel
Jacqueline Brown	Seymour Gordon	Natalie McMasters	Mary Shuh	Anne von Rosenstiel
Laura Bryant	Susan Gordon	Sonya Miller	Frederick Shuh	Betty Wagner
Matt Bryant	Patrick Green	Glenn Mosby	Norma Sleeper	Pearl Walker
Keith Bucklew	Lawrence Green	Dav Mosby	Norman Smith	Louise Weaver
Penelope Burns	Freda Hack	Mary Murdock	Martha Smith	Jane Weber
Eddy Burns	Royce Haiman	Barbara Niemczycki	Zelda Smith	Rudolph Weihe
Bryce Burton	Estelle Halle	Josephine O'Brien	Bill Smith	Marie Weir
Elnora Burton	Charles Henderson	Richard Oliver	Mirella Smith	Herbert Weisinger
Ralph Campbell	Bettina Herman	Natalie Oliver	Herb Snitzer	Louise Wenzel
Guna Carr	Stephen Herman	Meta Osborn	Anne Soehl	Larry West
Bonita Cobb	Marcia Hersey	Beverly Pankonie	Eugene Sorbo	Richard Wiest
Hillary Cone	Irwin Hersey	Wayne Parrish	Julia Sorbo	Phyllis Williams
Ralph Crammond	Susan Hicks	Frances Parrish	Mildred Spelman	Marie Williams
Jean Crerar	Mack Hicks	Bonnie Peavy	Gladys Starling	Mary Wilson
Carol Dameron	Liliana Hodges	Mary Perry*	Ellen Stavros	Geraldine Wilson
Smelia Damjanovich	Laura Hollar	Richard Perry	Kathryn Stenquist	Kathleen Wish
Gary Damkoehler	Hazel Hough	Stephen Peters	D. N. Stern	Steve Woodrough
Bruce Dandrew	William Hough	Rita Peters	Rebecca Stern	Margo Woodrough
John Davis	Lois Howrigan	Eric Peterson	Helen Stevenson	Margaret Word
Nomina Davis	Richard Hyse	Harry Piper	Stanton Storer	Phyllis Zarnas
Delphine Day	Josephine Hyse	Jacquelyn Piper	Dorothy Stovall	Roger Zeh
Paul Devereaux	Mardi Johnson	Eugene Ponessa	Kathleen Stover	Sally Zeh
Diana Dorken	Helen Jones	Margaret Ponessa	William Stover	William Zewadski
Tina Douglass	Judith Jourdan	Stephen Poohar	Carmen Stover	
Robert Douglass	Loveda Keating	Marie Potvin	Margaret Strum	
			Acheson Allesee	

*Bequest realized in 2018-2019 fiscal year

WAYS OF GIVING

OUTRIGHT GIFTS

Outright gifts can include checks, appreciated property, gifts of art, or other tangible personal property. All cash gifts are 100% tax deductible.

GIFTS OF APPRECIATED STOCK

By giving appreciated stock to the Museum, donors may avoid paying capital gains tax and receive a tax deduction for the fair market value of the gifts. For instructions on the transfer of stocks, please contact the Development Office.

IRA CHARITABLE ROLLOVER

The charitable IRA rollover, or qualified charitable distribution (QCD), is a special provision allowing donors to exclude from taxable income and count toward required minimum distribution certain transfers of individual Retirement Account (IRA) assets directly to public charities such as the Museum. Your financial or tax advisor can help with this transaction.

PLANNED GIFTS

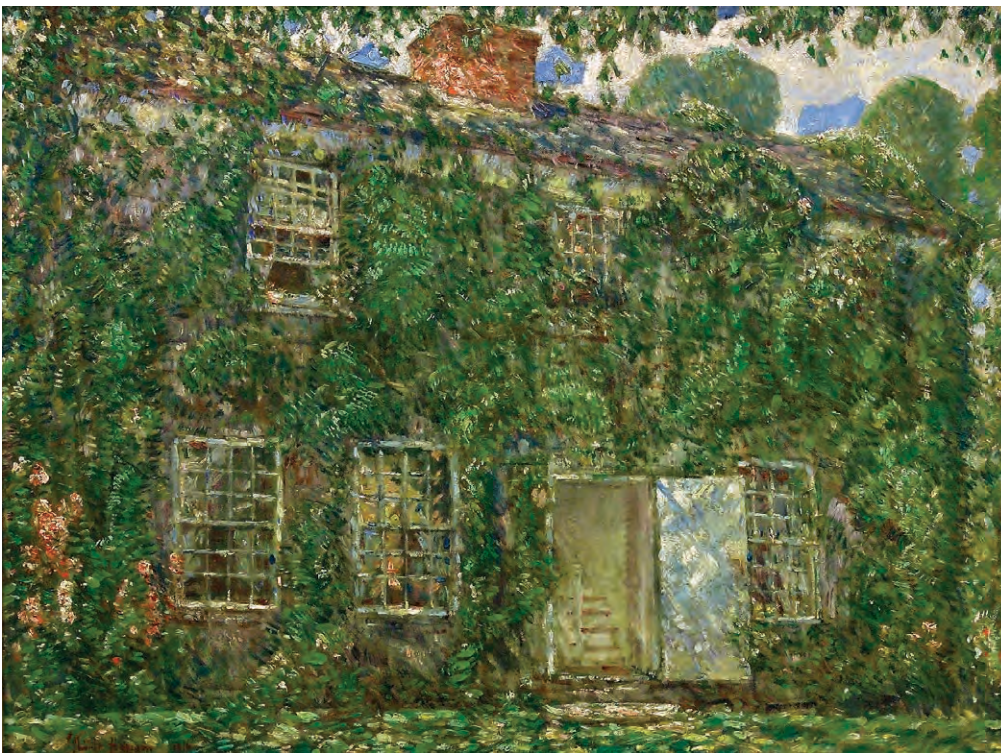
Planned gifts such as charitable remainder trusts, charitable lead trusts, retained life estates, retirement plan designations, life insurance designations or bequests may reduce inheritance taxes and benefit the Museum. Check with your financial advisor for the best plan, and let us know of your intent so we can recognize you as a member of our Legacy Society.

NAMING OPPORTUNITIES

In recognition of leadership gifts, donors may reserve naming rights for exhibitions, programs and specific spaces throughout the Museum's main building and Hazel Hough Wing. Learn more by contacting the Development Office.

MATCHING GIFTS

Many employers sponsor matching gift programs to match charitable contributions made by their employees. Gifts from retirees and spouses may also qualify for a match. Ask your company human resource department for program details.



For more details or to inquire about other ways you can support the Museum of Fine Arts, please contact the MFA Development Office at (727) 896-2667 or visit mfastpete.org/give

IMAGE CREDITS

Cover

Jan Davidsz. De Heem (Dutch, 1606–1683/4), *A Still Life of Flowers in a Glass Vase in a Stone Niche*, Oil on oak panel, Grasset Collection

Page 1

John Leslie Breck (American, 1860–1899), *Evening in Giverny*, c. 1891, Oil on canvas, Museum purchase with funds donated by the Collectors Circle in honor of the Museum's 50th Anniversary

Page 14

Unknown Flemish Painter, Active c. 1500, *St. Ghislain in a Landscape*, c. 1500, Oil on panel, Museum purchase with funds provided by Timothy and Janna Ranney

Page 19

Agathon Léonard (French, b. Belgium, 1841–1923), *Le Jeu de l'Écharpe* (*The Scarf Dancer*), c. 1900, Gilt bronze, Gift of Mary Alice McClendon

Page 20

Photo courtesy of Steve Splane/WUSF.

Page 22

Worcester Royal Porcelain Vase, British, c. 1870, Porcelain, Gift of Mrs. Beulah Temko in memory of David Coates

Page 24

Childe Hassam (American, 1859–1935), *The "Home, Sweet Home" Cottage, East Hampton, L.I.*, 1916, MFA 40th Anniversary & Collectors Circle 10th Anniversary Purchase with funds raised by the Collectors Circle



MUSEUM OF FINE ARTS ST. PETERSBURG

255 BEACH DRIVE NE, ST. PETERSBURG, FL 33701
MFASTPETE.ORG

This Annual Report acknowledges contributions made to the Museum of Fine Arts during the 2018-2019 fiscal year from July 1, 2018 through June 30, 2019. Every effort has been made to ensure accuracy. Please notify Mikeesha Means, Manager of Individual Giving, (727) 896-2667 ext. 231 if our records need to be amended.