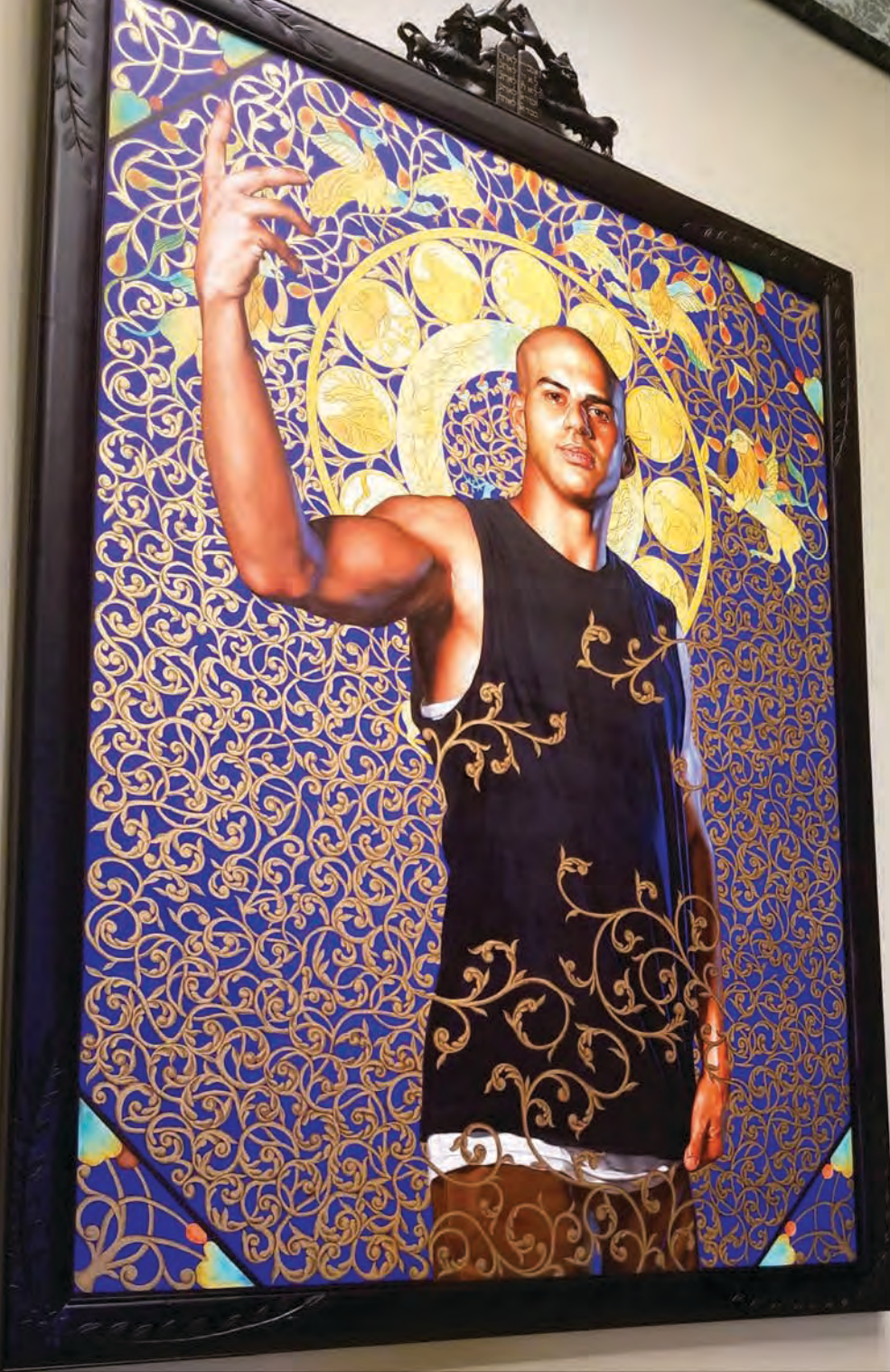


MUSEUM OF FINE ARTS ST. PETERSBURG



Small informational text label on the wall.





MUSEUM OF FINE ARTS ST. PETERSBURG

MISSION STATEMENT

Our mission is to engage, educate and excite the community by collecting, exhibiting, and preserving works of art for the enjoyment of all.

VISION STATEMENT

The Museum of Fine Arts, St. Petersburg, Florida is the cultural leader of our community. Our comprehensive collection, exhibitions, and programs celebrate art and engage the diverse cultures and communities we serve.

VALUES

- Excellence and integrity in the museum's stewardship
- Artistic creativity and cultural diversity
- Education and engagement
- Commitment and support of our community
- Accessibility and inclusiveness
- Best practices as an organization

CONTENTS



MESSAGE FROM THE EXECUTIVE DIRECTOR AND CEO	2
FINANCIAL REPORTS	3
2019-2020 LEADERSHIP	4
EXECUTIVE COMMITTEE, BOARD OF TRUSTEES, HONORARY TRUSTEES, MFA STAFF	
SIGNIFICANT DIGITS	5
EXHIBITIONS	6-8
PROGRAMS	9
SPECIAL EVENTS	10
DECK THE GREAT HALL, NYE@MFA	
GALLERY RENOVATION PROJECT	11
THE MARGARET ACHESON STUART SOCIETY	12
DONOR SPOTLIGHT	13
DONOR HONOR ROLL	14-15
CIRCLE LEVEL	16
GIFTS OF ART	17
CORPORATE AND COMMUNITY PARTNERS	18
IN-KIND GIFTS	19
MATCHING GIFTS	19
MEMBERSHIP	20
DOCENTS	21
SUPPORT GROUPS	22
COLLECTORS CIRCLE, FRIENDS OF PHOTOGRAPHY, FRIENDS OF DECORATIVE ARTS, MARLY MUSIC SOCIETY, THE CONTEMPORARIES	
MEMORIALS AND TRIBUTES	24-25
LEGACY SOCIETY	26-27
MESSAGE FROM CHAIRMAN OF THE BOARD	28
WAYS OF GIVING	29

A MESSAGE FROM THE EXECUTIVE DIRECTOR AND CEO



Dear Friends,

As we look back on this fiscal year, I am filled with gratitude for all that our members and donors made possible at the MFA. Well before the long shadow of COVID-19 caused us to ‘pause’ for safety, your support made it possible for us to present surprising, engaging, and thoughtful exhibitions that drew new audiences. Your gifts made inspiring programs happen for visitors of all ages—from folding origami cranes, to enjoying a 10-course “BugsGiving” feast, to marveling at the collaborative spirit we celebrated through live performances with *Art of the Stage*. And while the museum was physically closed, your dedication made it possible for us to reach young people and adults through inventive online programming. Your generosity brought the best of the arts to our community and made a difference for so many. Thank you.

There are so many highlights in the last year to celebrate! *‘The Grasshopper and the Ant’ and other Stories, as told by Jennifer Angus* was a particular highlight for me personally. It was the first exhibition I curated for the MFA, and it was a delight to work with the artist, and to watch the entire MFA team bring this most unusual show to fruition. I enjoyed hearing the conversations Jennifer’s work sparked, and of course watching our members and visitors come back again and again to take in all the glorious details. Installing our beehives on the roof (and later harvesting that delicious Museum of Fine Honey!) was a perfect complement to the exhibition and its message.

Our spectacular winter exhibition, *Art of the Stage: Picasso to Hockney*, demonstrated, in a vivid way, the importance of collaboration between disciplines. Artists like Matisse, Picasso, Goncharova, Indiana, Hockney and others were all inspired to create alongside their contemporary masters of opera, dance, and theater. It was the perfect opportunity for the MFA to partner with many regional and national performing arts organizations to bring performance to the museum in a big way! I was especially proud to have brought the Sphinx Organization to St. Petersburg, and to share their important mission of increasing diversity in classical music with our community.

The MFA’s stellar collection continues to grow thanks to the generosity of many. Our Collectors Circle kicked off its 25th Anniversary year with the purchase of Kehinde Wiley’s monumental *Leviathan Zodiac* from the series *World Stage: Israel* (2011)—already a fan favorite! And, we received many generous donations of works of art, from photographs, to promised gifts of important antiquities, to a magnificent collection of Mesoamerican masks which will debut in our newly renovated and reinstalled galleries this fall. The MFA has always been a collector’s museum, and this tradition of philanthropy continues unabated in a way that makes our museum the largest, and most important, encyclopedic collection in Florida.

The Museum of Fine Arts is stronger and more vibrant with you. Thank you for your support, enthusiasm for our mission, and confidence in the museum’s forward momentum.

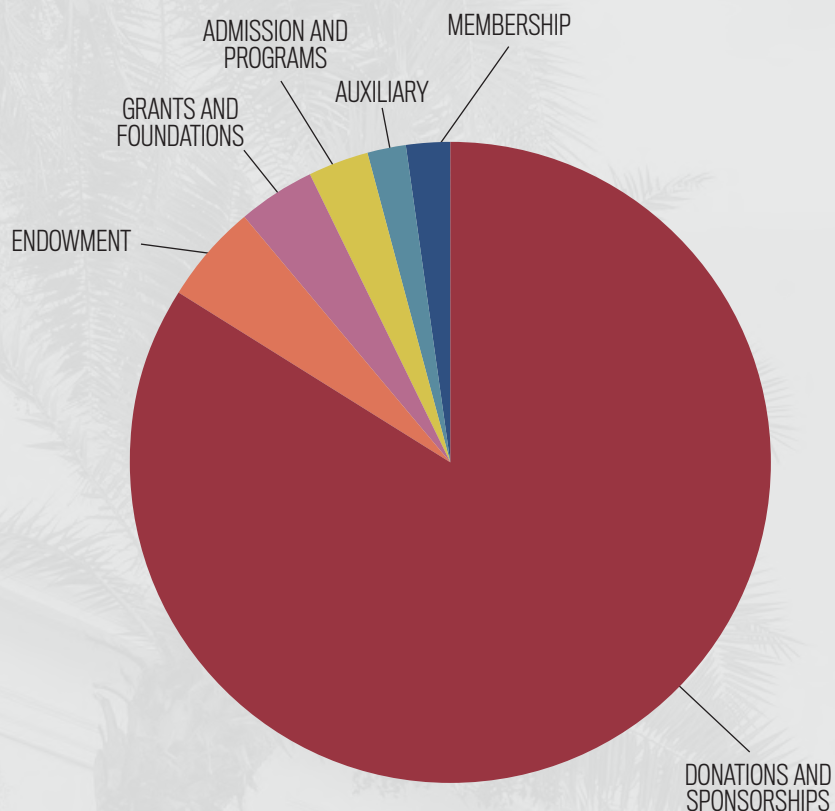
Sincerely,

Kristen A. Shepherd

Kristen A. Shepherd
Executive Director and CEO

FINANCIAL REPORTS

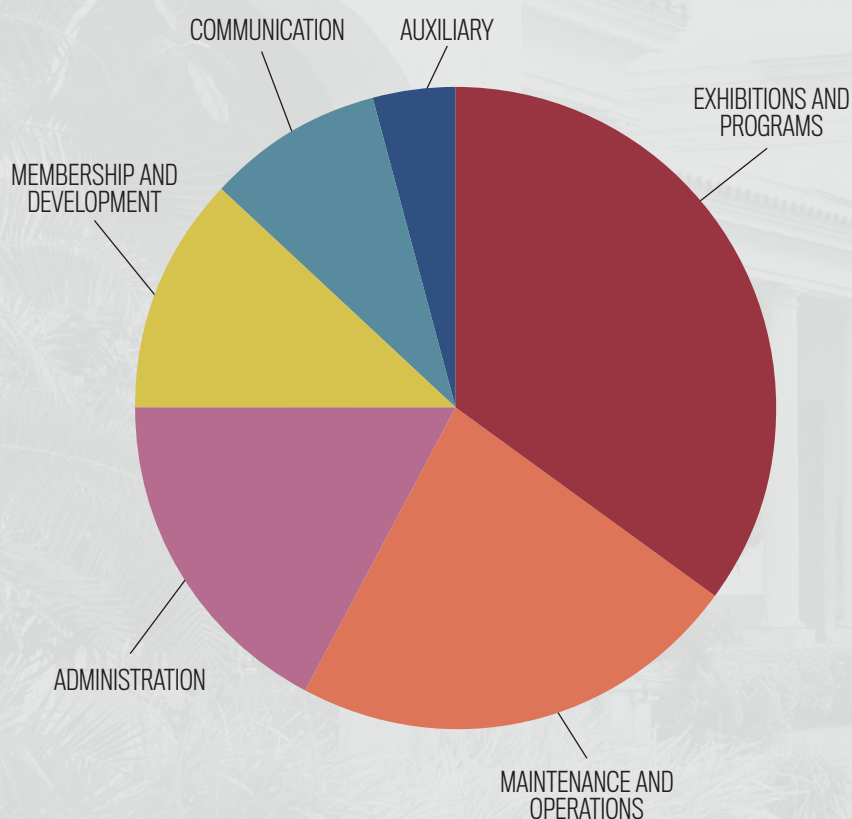
Operating Income Statement*



2019-2020 REVENUE

DONATIONS AND SPONSORSHIPS**	\$12,981,982	84%
ENDOWMENT	\$785,355	5%
GRANTS AND FOUNDATIONS	\$606,497	4%
ADMISSION AND PROGRAMS	\$397,644	3%
AUXILIARY	\$382,405	2%
MEMBERSHIP	\$379,757	2%

TOTAL REVENUE **\$15,533,640*** **100%**



2019-2020 EXPENSE

EXHIBITIONS AND PROGRAMS	\$1,647,477	35%
MAINTENANCE AND OPERATIONS	\$1,058,529	23%
ADMINISTRATION	\$772,083	17%
MEMBERSHIP AND DEVELOPMENT	\$557,179	12%
COMMUNICATION	\$436,243	9%
AUXILIARY	\$199,609	4%

TOTAL EXPENSE **\$4,671,119*** **100%**

*unaudited

**contributions include realized legacy gifts

2019-2020 LEADERSHIP

EXECUTIVE COMMITTEE

Fred Razook, Chairman
Dimity Carlson, Vice-Chairman
Craig Sher, Treasurer
Emily Elwyn, Secretary
Cathy Collins
Kristen A. Shepherd, ex officio

BOARD OF TRUSTEES

George Baxter
Laura Bryant
Maria Cantonis
Timothy Coop
Ward Curtis
Piers Davies
Robert Drapkin
Skipp Fraser
Gordon Gilbert
Jim Gillespie
Troy Holland
Richard Kriseman, ex officio
Ya La'ford
Fay Mackey
Mark Mahaffey
Patti Novack
Jim Reichert
Candy Scherer, ex officio
Ellen Stavros
Scott Wagman

TRUSTEES EMERITI

Seymour Gordon
Carol Upham



MFA STAFF

Kristen A. Shepherd, Executive Director and CEO

ADMINISTRATION

Vicki Sofranko, Executive Assistant
Jorge Vidal, Manager of Special Projects
Diana Waters, Chief Financial Officer

CURATORIAL DEPARTMENT

Michael Bennett, PhD, Senior Curator of Early Western Art
Bridget Bryson, Manager of Curatorial Affairs & Communications
Stephanie Chill, Curatorial Assistant
Kenny Jensen, Preparator
Meghan Maloney, Registration Assistant
Allison Moore, PhD, Curator of Photography
Katherine Pill, Curator of Contemporary Art
Amanda Robinson, Registrar
Stanton Thomas, PhD, Curator of Collections & Exhibitions
Jorge Valenzuela, Preparator
Erin Wilson, Curatorial & Registration Assistant

PUBLIC PROGRAMS

Kimberlynn Martin, Manager of Education & Youth Programs
Margaret Murray, Associate Curator of Public Programs

ADMISSIONS AND VISITOR SERVICES

Billy Summer, Manager of Visitor Services & Group Tours

DEVELOPMENT AND MEMBERSHIP

Nina Antonetti, PhD, Chief Development Officer
Daryl DeBerry, Director of Institutional & Planned Giving
Kimberly Finn, Manager of Member Services
Mikeesha Means, Manager of Individual Giving
Jennifer Posey, Membership & Volunteer Coordinator

MARKETING & PUBLIC RELATIONS

Lashonda Curry, Manager of Communications & Public Relations
Julie A. Wilson, Director of Marketing & Communications

OPERATIONS

J.P. Fatseas, Director of Operations
Damian Piekarski, Facilities Associate
Michael Pippen, AV and Event Support Coordinator

As of June 30, 2020

SIGNIFICANT DIGITS

71,379

visitors

476

docent-led tours

215

acquisitions

Approximately

5,000

insects for **Jennifer Angus**

38

orchestral musicians
played **#AtTheMFA**

4,313

Stuart Society
volunteer hours

10

BugsGiving
courses

**Sphinx
Virtuosi**

performed at

11

venues
during
their **3-day**
residency

277

social media **posts created** during
MFA closure

43

live
performances

11

young women joined us for the first
Wild Creations workshop

EXHIBITIONS

The MFA presents diverse exhibitions each year to reflect the community we serve and the encyclopedic nature of our collection. Though our exhibition schedule was shortened due to COVID-19, each show provided our visitors unique opportunities to engage with art and the museum.

'THE GRASSHOPPER AND THE ANT' AND OTHER STORIES, AS TOLD BY JENNIFER ANGUS

OCTOBER 12, 2019 – JANUARY 5, 2020

A neo-Victorian, Jennifer Angus challenged our perceptions and expectations by working in an unusual medium: dried, exotic insects. Inspired by a painting in the MFA's collection, Angus's project used Aesop's fable *The Grasshopper and the Ant* as its starting point. Her site-specific installation incorporated large, brilliantly-colored insects into elaborate patterns inspired by Victorian wallpaper and nineteenth-century book illustration.



EXPLORE THE VAULTS: VISIONS OF FRANCE

AUGUST 24, 2019 – APRIL 12, 2020

Featuring late nineteenth- and twentieth-century prints of the French capital and countryside, *Explore the Vaults: Visions of France* offered a new and intimate way to experience rarely seen, vulnerable works from the MFA's collection in a unique exhibition format. The first iteration in a series, visitors were invited to open storage drawers to view curated selections from the museum's expansive holdings.

ANCIENT THEATER AND THE CINEMA

NOVEMBER 9, 2019 – APRIL 5, 2020

Ancient Theater and the Cinema was the first exhibition to combine ancient images of the Greek theater with movie stills inspired by Greek plays and mythology. The dialogue between ancient and contemporary images displayed the continuity of Greek theater across nearly two and a half millennia, demonstrating its enduring legacy and profound influence.



UP CLOSE AND PERSONAL: ART ON AN INTIMATE SCALE

AUGUST 17, 2019 – MARCH 29, 2020

Primarily drawn from the MFA collection, this exhibition focused on often overlooked diminutive objects that reveal the significance of individual taste. At the same time, these personal works offered intimate glimpses into how they functioned as mementos, objects of private religious devotion, symbols of political affiliations, or signifiers of wealth and status.

EXHIBITIONS

ART OF THE STAGE: PICASSO TO HOCKNEY

JANUARY 25 – MAY 10, 2020

Seductively reflecting the grand history of Western art from the vantage point of the stage, *Art of the Stage* featured over 100 studies by noted artists from the nineteenth century to the present day. The MFA collaborated with local and national performing arts organizations, and the museum's galleries were animated with dance, music, theater, and opera performances during the run of this exhibition.



EXHIBITIONS

These exceptional exhibitions are made possible through the generosity of sponsors and underwriters. A very special expression of gratitude goes to **Marianne and Mark Mahaffey** and **Penny and Jeff Vinik** for their commitments to multiple exhibitions.

Mark Anderson and Keith Bucklew
Suki and John Carson
Dr. Dimity and Mark Carlson
City of St. Petersburg
DMG School Project
Belinda Dumont
Dr. Richard Eliason and Mardie Chapman

Lightning Foundation
Helen and Richard Minck Memorial Foundation
The Margaret Acheson Stuart Society
Pinellas County Schools
Janna and Timothy Ranney
State of Florida, Division of Cultural Affairs
William Zewadski



For the first time ever, we had a group of philanthropic donors, **Friends of Art of the Stage**, that rose to the occasion with individual donations to create a collective exhibition sponsorship. If you have an interest in joining a collective sponsorship for upcoming exhibitions, please contact our Chief Development Officer, Nina Antonetti, PhD at (727) 896-2667 ext. 211. Thank you to our inaugural **Friends of Art of the Stage**:

Anonymous
Debbie and George Baxter
Laura and Matt Bryant
Maria and George Cantonis
Dr. Dimity and Mark Carlson
Daryl DeBerry
Chitraneer and Dr. Robert Drapkin
Belinda Dumont
Dr. Richard Eliason and Mardie Chapman
Emily and Jim Gillespie
Judy and Troy Holland
Linda Jantschek

Suzanne and Jim MacDougald
Glenn and Dav Mosby
Patti and Irwin Novack
J. Crayton Pruitt Foundation
Janna and Timothy Ranney
Gail and Fred Razook
Willi Rudowsky and Hal Freedman
Judith and Michel Sauers
Kristen A. Shepherd
Ellen Stavros
Lorna Taylor
Carol and Fred Whaley

PROGRAMS

Public programs are fundamental to our exhibitions as they enable guests to interact with the museum on a deeper level. Every month, the MFA offers special lectures, gallery talks, musical performances, and so much more. The MFA presents over 200 public programs throughout the year for families, guests of all ages and lifelong learners.

This year, the MFA was excited to collaborate with regional and national performing arts organizations to create engaging virtual programming, as well as #MFAfromHome online offerings and Art Break with the MFA!, to adapt to our community's needs during a global pandemic. New youth and family programs included Museum Minis, Explore More! Family Days and Single-Day Fall Camps. In addition to providing enlightening content for the youth and families, we also worked with the intern and fellowship programs of University of South Florida, Eckerd College and Helen Gurley Brown's Pussycat Foundation for five motivated individuals to experience working in a museum. Other popular recurring programs such as Cocktails & Collections, Coffee Talks, and our Marly Music series attracted new audiences as we celebrated the quality of our exhibitions and enabled our community to engage with the museum in new and meaningful ways.

Our first empowerment and art workshop for young women focused on the lives and work of female artists and was led by the women of the MFA's Curatorial team. During *Above the Fold*, students from St. Petersburg's Sister City in Takamatsu, Japan helped museum visitors fold 1,000 paper cranes, which we sent to Hiroshima, Japan to be displayed in the Children's Peace Monument. *Art of the Stage* welcomed a robust schedule of over 40 programs to complement the exhibition, including, The Florida Orchestra who performed to a sold-out audience in the Conservatory, Sarasota Ballet Conservatory ballerinas as live sketch models in the galleries, and two artist residencies.

Thank you to the donors listed below who sponsored our public programs in the 2019-2020 fiscal year and a special thank you to those who transferred funds to the next fiscal year from cancelled programs due to COVID-19:

AARP Florida

Anonymous

Bank of America | Museums on Us

City of St. Petersburg Office of Cultural Affairs

The Gardner Cowles Charitable Trust

Focardi-Great Bay Foundation

Gobioff Foundation

Hough Family Foundation

Kane's Furniture

Pinellas Community Foundation

Premier Eye Care | Lorna Taylor

RBC Foundation

State of Florida, Division of Cultural Affairs

St. Petersburg/Clearwater Film Commission

Tampa Bay Rays Foundation

Trenam Law

Westminster Communities of St. Petersburg



SPECIAL EVENTS



DECK THE GREAT HALL

The museum was thrilled to celebrate the second annual Deck the Great Hall, our community open house event for the holiday season. Leading contemporary artist and Miami-based sculptor, Brookhart Jonquil, was commissioned to create a limited-edition glass ornament, *Suspended Star*, for the museum's holiday celebration. Jonquil uses industrial materials with geometric precision to explore theories of infinity and utopia. This special event provided free access to the MFA collection, a tree-lighting ceremony, live music and refreshments thanks to The Margaret Acheson Stuart Society. The museum's first support group generously underwrote the commission of *Suspended Star*, and our holiday open house celebration. We are deeply grateful to the Stuart Society and all those in attendance for their support of this jovial tradition as we bring our community together to celebrate art in new and exciting ways.



NYE@MFA

Together we rang in 2020 during NYE@MFA: *Flights of Fancy*, and made it a magical night to remember. Thank you to all who filled entire tables of guests for dinner, and to everyone who celebrated with us at our second annual NYE@MFA. This event generated more than \$80,000 for the MFA and its mission.

Special recognition goes to Deann Coop and Sue Knipe, our volunteer co-chairs, who helped make this sold-out event such a success. Thank you to the following sponsors and underwriters who supported NYE@MFA:

Mark Anderson and Keith Bucklew

Dr. Dimity and Mark Carlson

Suki and John Carson

Deann and Tim Coop

Crown Automotive Group

Emily and Tash Elwyn

State of Florida, Division of Cultural Affairs

Hancock Whitney Bank

Sue and Rich Knipe

GALLERY RENOVATION PROJECT

In the course of the museum's 55-year history, there have been additions, renovations, and general improvements that maintain a standard of excellence in the stewardship of the facility and for the art. The last renovation in the collection galleries took place in 2013, but without substantial changes in layout or presentation of the works. A project reimagining the collection galleries was reviewed by the Board of Trustees, resulting in a campaign to create an experience that enriches and enhances the display of the art.

This capital project was accelerated by our Curatorial and Facilities staff during the museum's closure due to COVID-19, and would not have been possible without the generosity of individuals and grantors. Special thanks go to those who supported this project. Our deepest gratitude goes to Mark and Marianne Mahaffey for an inspirational and extraordinary matching gift that launched the campaign.



We sourced personal protective equipment to move the eighteenth-century British pier mirrors for safety against potential exposure to mercury, of which there was none.

THE MARGARET ACHESON STUART SOCIETY

Bearing our founder's name, The Margaret Acheson Stuart Society is a non-profit volunteer organization and a major donor for the museum. This all-volunteer group comprised of over 360 dedicated members honor Mrs. Stuart with their outstanding generosity and diligent efforts throughout the year to ensure the museum remains the premier arts destination in St. Petersburg.

The Stuart Society committees host signature events each year that all expand upon the mission of the museum. These include Art in Bloom, SmARTly Dressed and Affaires d'Art. New this year was a special event, Party of the Strange, to support the MFA's exhibition *Art of the Stage: Picasso to Hockney*. Proceeds from these events are presented to the MFA at the end of each fiscal year to support the museum. The museum is deeply grateful to The Stuart Society for successfully promoting the welfare of the museum, stimulating public interest, and participating in museum activities.



Thank you to the Margaret Acheson Stuart Society members and their leadership in the 2019-2020 fiscal year.

EXECUTIVE BOARD OFFICERS

Candy Scherer, President
Rita Peters, President-Elect
Pam Hatton, Membership Vice President
Diana Whittle, Communications Vice President
Kathryn Ludwig, Recording Secretary
Carolyn Bond, Corresponding Secretary
Beverly Smoak, Treasurer
Elise Minkoff, Parliamentarian
Kristen A. Shepherd, Executive Director and CEO

STANDING BOARD COMMITTEES

Jean Catanese, Digital Chair
Dawn Sumner, Membership Chair
Elise Minkoff, Nominating Chair
Loretta Stitt, Provisional Chair
Carol Piper, Ways and Means Chair

EVENT CHAIRS

Carole McGurk, Affaires d'Art Chair
Carol Piper and **Candy Scherer**, Art in Bloom Co-Chairs
Dawn Sumner and **Pam Hatton**, Smartly Dressed Fashion Show Co-Chairs
Lisa Funsch and **Mary Anna Murphy**, Party of the Strange Chairs

Past Presidents of the Margaret Acheson Stuart Society.



DONOR SPOTLIGHT

BELINDA DUMONT

How did your interest in the arts originate?

Among my family and our circle were art collectors, writers, and musicians. My father took me to Tanglewood, and from an early age I developed a love of music and art.

Why do you give to the MFA?

It is necessary for life, for all of us. You cannot have a city without art. And I love St. Petersburg.

What moment made you particularly proud to support the MFA?

I was proud when I saw we included a stage in the *Art of the Stage* exhibition. I was proud to play a part in bringing the performing and visual arts together.



Belinda Dumont, pictured third from the left, during *Art of the Stage: Picasso to Hockney*.



DONOR HONOR ROLL

The Museum of Fine Arts depends on contributions for every special exhibition, public program and engaging event we host. This year, our donors stepped forward at a time when we needed support unlike ever before. The support of each individual, corporation, foundation, and grant listed below enabled the MFA to amplify the power of art throughout the 2019-2020 fiscal, and during a global pandemic. The MFA is incredibly grateful for your generosity and philanthropy.

Thank you to our donors contributing \$250 or more between July 1, 2019 and June 30, 2020:

\$50,000 AND ABOVE

Anonymous
Hough Family Foundation, Inc.
Marianne and Mark Mahaffey
Helen and Richard Minck
Memorial Foundation
Janna and Timothy Ranney
The Margaret Acheson Stuart Society
Jim Sweeny
Penny and Jeff Vinik

Patti and Irwin Novack
Pinellas Community Foundation
Gail and Fred Razook
Jim Reichert
Jan and Craig Sher
Trenam Law
Westminster Communities of St. Petersburg
William Zewadski

Kathy and Patrick Beyer
Laura and Matt Bryant
Jacqueline and William Brown
Ruth and Donald Campagna
Sue Ann Carey
Sunny and James Endicott
Fields Galley Private Foundation
The Gardner Cowles Charitable Trust
Seymour and Susan Gordon
Green, Henwood and Hough Investment
Group | RBC Wealth Management
Beth Houghton and Scott Wagman
Kathleen Swann Brooks Family Foundation
Lightning Foundation
Toni and Kent Lydecker
Fay Mackey
Mary Alice McClendon
Carole and Lawrence Merritt
Demi and Sam Rahall
Ed and Kathy Rawls
RBC Foundation
Willi Rudowsky and Hal Freedman
Judith and Michel Sauers
Nancy and Robert Shannon
Ellen Stavros
Brenda Verbeck
Carol and Fred Whaley

\$25,000 TO \$49,999

AARP Florida
Bank of America
Dr. Dimity and Mark Carlson
Chitrane and Dr. Robert Drapkin
Belinda Dumont
Dr. Richard Eliason and Mardie Chapman
George R. Ellis
Emily and Tash Elwyn
Francis & Gertrude Levett Foundation
Mary and Tom James
State of Florida, Division of Cultural Affairs

\$5,000 TO \$9,999

Susan and Ramon Bosquez
Cantonis Family Foundation
Gail and Paul Carroll
Suki and John Carson
Cathy and Steve Collins
Deann and Tim Coop
Focardi-Great Bay Foundation
Joyce and Skipp Fraser
Dr. Gordon Gilbert and
Mrs. Michele Kidwell-Gilbert
Hancock Whitney Bank
Judy and Troy Holland
J. Crayton Pruitt Foundation
Kane's Furniture
Suzanne Kirkconnell
Suzanne and Jim MacDougald
Maurice A. and Thelma P. Rothman
Foundation Inc.
Judith and James Mitchell
Rita and Stephen Peters
Premier Eye Care | Lorna Taylor
Arlene Rothman
Riverwalk Wealth Advisors | Matthew Lytell
Iris Salzer
Margaret and Bert Smith
St. Petersburg/Clearwater Film Commission
Sue and Roger Thrun
Helen Torres Foundation

\$10,000 TO \$24,999

Anonymous
Mark Anderson and Keith Bucklew
Debbie and George Baxter
City of St. Petersburg
Crown Automotive Group
Barbara and Ward Curtis
Gerry and Allen Davidson
Liz Dimmitt and Piers Davies
Ann and Bill Edwards
Embrace the Arts Foundation
Frank E. Duckwall Foundation
Emily and Jim Gillespie
Gladys Kriebel Delmas Foundation
Gobioff Foundation
Dr. Ilda Hall
Glenn and Dav Mosby

\$2,500 TO \$4,999

Cynthia Astrack
Dr. Verna Baughman

\$1,500 TO \$2,499

Dr. Gene and Toni Altman
Charlotte Bacon
Lynell and C. Robert Bell
Charles Cagnon
Susan and Mack Hicks
Kathryn and George Ludwig
Claudia McCorkle
Sheila and Ronald Miller
Kristen A. Shepherd
Mary Shuh
Carole and Clem White

DONOR HONOR ROLL



\$1,000 TO \$1,499

Lois and Marvin Atkins
 Andi and Russ Barlow
 Margaret Bowman
 Louise and Lloyd Chapin
 Hillary Cone
 Barbara and Doug DeMaire
 Susan and Ron Diner
 Mrs. Henry Esteva
 The Hon. Marion L. Fleming and
 The Rev. Peter W. Fleming
 Frank and Vicki Fox
 Thomas Geoghegan
 Helen Hameroff and Frantz Christensen
 Jan and Bill Haueisen
 Linda Jantschek
 Robert Klingel
 Catharine and Gordon Knapp
 Dr. Peter and Yvonne Pav
 Raymund Foundation
 Laura and Marc Rutenberg

Candy Scherer
 Dr. John E. Schloder and Mr. Terence Leet
 The Honorable Mel and Betty Sembler
 David and Carol Sjolund
 William and Kathleen Stover
 Tampa Bay Rays Foundation
 Dr. Susan M. Taylor
 Jesse, Mila, Zoe and Owen Turtle

\$250 TO \$999

Anonymous
 Dr. and Mrs. Edward Amley
 Marion and William Ballard
 Sally and Tom Baynard
 Valerie and Jack Beatty
 Bonita Bellows
 Marilyn and Philip Benjamin
 Trisha and Robert Birkenstock
 Karen and Arthur Birnkrant
 George and Pamela Campbell
 Rene Clark and Richard Davis

Elizabeth Coerver
 Dorothy Cooper
 Ellen Cotter
 Laura and Dan Crawford
 Daryl DeBerry
 Carol and Justus Doenecke
 Jane and David Egbert
 Dorothy and John Fischer
 Harriette Goldenberg
 Laurel Greene
 Ms. Lenna Grove
 Royce Haiman
 Bernie Hall
 Alice and David Hoffman
 Elly and John Hopkins
 Lynda and Dean Jollay
 Camilla Kilgroe
 Jean and Rudolph Kohler
 Krokidas and Bluestein LLP
 Teresa and Robert Kropp
 Kay Leonard
 Helen Leslie
 Nina and James Light
 Deborah and Jim Long
 Laurie and Charles Lowe
 Monika and Frederick MacFawn
 Mary and Edward Maloof
 Patricia and Lamar Marchese
 Mary Ann and Bruce Marger
 Dr. and Mrs. Franklin S. Massari
 Barbara and Frederic McCoy
 Elaine Murphy and Thomas Merrick
 Pamela and Stephen Newman
 Christine and Michael Oertle
 Ms. Bonnie G. Otis
 Jerry Owen
 Eric Lang Peterson
 Sandy Rief and Diane Eger
 Dorothy and Tom Ritschel
 Mrs. Heidemarie E. Robinson
 Heidi and Fred Sherman
 Ruth and James Spears
 Kelly and Christopher Still
 Jane and Kurt Strasser
 Robert Strickland
 John and Loraine Tsavaris
 Sally Truby
 Hugh and Keith Tulloch
 Danielle and David Tyler
 Nancy Watson

CIRCLE LEVEL

Among these donors are an exceptional group of individuals who make the museum a personal philanthropic priority year after year. Their significant gifts made on an annual basis demonstrate a commitment worthy of special recognition. This 2019-2020 fiscal year report acknowledges our four circle levels: **Chairman's Circle** at \$50,000 or more, **Director's Circle** at \$25,000, **Founder's Circle** at \$10,000 and **Patron's Circle** at \$5,000.

CHAIRMAN'S CIRCLE

Anonymous
Mary and Tom James
Marianne and Mark Mahaffey
Janna and Timothy Ranney
Jim Sweeny
Penny and Jeff Vinik
Hazel and William Hough

DIRECTOR'S CIRCLE

Dr. Dimity and Mark Carlson
Chitraneer and Dr. Robert Drapkin
Dr. Richard Eliason and Mardie Chapman
Emily and Tash Elwyn

FOUNDER'S CIRCLE

Anonymous
Debbie and George Baxter
Barbara and Ward Curtis
Gerry and Allen Davidson
Ann and Bill Edwards
Emily and Jim Gillespie
Dr. Ilda Hall
Glenn and Dav Mosby
Patti and Irwin Novack
Jim Reichert
Jan and Craig Sher

PATRON'S CIRCLE

Susan and Ramon Bosquez
The Cantonis Family Foundation
Gail and Paul Carroll
Suki and John Carson
Cathy and Steve Collins
Deann and Tim Coop
Joyce and Skipp Fraser
Dr. Gordon Gilbert and Michele Kidwell-Gilbert
Judy and Troy Holland
Suzanne Kirkconnell
Judith and James Mitchell
Rita and Stephen Peters
Iris Salzer
Margaret and Bert Smith
Lorna Taylor
Sue and Roger Thrun



GIFTS OF ART

The MFA Collection is central to all we do and enables us to tell stories from all eras and cultures. Art donors help us tell these stories, and we are deeply grateful for works accessioned in the 2019-2020 fiscal year. Gifts are noted in parentheses.

Anonymous (1)

Tom Bird (24)

Collectors Circle (1)

Chitraneer and Dr. Robert Drapkin (16)

George R. Ellis (76)

Michael Graham (8)

Mr. and Mrs. Howard B. Greene (1)

Sarah and Daniel Hoffe (81)

Fay Mackey (1)

Mary Ann and Bruce Marger (1)

Eric Lang Peterson (2)

Sylvia and Vincent Sorrentino (4)

Jim Sweeny (1)



CORPORATE & COMMUNITY PARTNERS

The museum is fortunate to have partners who believe in our mission. Through support of the arts, corporations and community partners make a difference in the quality of life for residents and in the overall experience for visitors to Tampa Bay. The alliances are mutually beneficial and deeply appreciated. They ensure a vibrant cultural landscape while giving back to the community.

Academy Prep
Blossom Montessori School for the Deaf
British Film Institute
Brooklyn Bugs
The Carlson Group
Dr. Carter G. Woodson African American Museum
Children's Peace Monument, Hiroshima, Japan
Community Foundation of Sarasota
Community Foundation of Tampa Bay
Creative Clay
Creative Pinellas
Eckerd College
Florida Sherrifs Youth Ranches
Lakewood High School
Margaret Barbieri Conservatory
National Gallery of Art
Noble Nectar Apiaries
Open/Space Collective
Pinellas County Center for the Performing Arts
Pinellas County District Schools
Pinellas County Public Works Department
Pinellas Public Library Cooperative
Raymund Foundation, Inc.
Sphinx Organization
St. Anthony's Hospital
St. Petersburg Arts Alliance
St. Petersburg International Folk Festival, Inc
St. Petersburg Office on Aging
St. Petersburg Opera Company
St. Petersburg College
State of Florida, Department of Agriculture
The Sunshine Center
Takamatsu International Association
Rowdies Soccer Fund
The Florida Orchestra
The Sarasota Ballet
University of South Florida



IN-KIND GIFTS

By providing goods and services, this list of donors fulfilled specific needs, which help defray expenses during the year. These specific gifts are important to recognize as in-kind donations.



Anonymous
CB Lundy's
Dr. Dimity and Mark Carlson
Carlson Maritime Travel
The Florida Cane Distillery
Google Ad Grant | Cause Inspired Media
Beth Houghton and Scott Wagman
Olympia Catering | Events
Janna and Timothy Ranney
Gail and Fred Razook
St. Cate Fine Arts
Tampa Bay Magazine
Tampa Bay Times
Mary Wheeler
WUSF Public Media

MATCHING GIFTS

Donations have an even greater impact when businesses offer matching gift programs. Please check with your employer and help us grow this list. The MFA benefited from these matching donors.



Community Foundation of Tampa Bay
Gerry and Allen Davidson
Facebook
Dorothy and John Fischer
IBM International Foundation
Jean and Roger Jester
Johnson & Johnson Matching Gifts Program
Marianne and Mark Mahaffey
Olin Corporation Charitable Trust
Lucille Sweeney
Trenam Law
William Zewadski

MEMBERSHIP

Members provide the MFA with vital philanthropic support that makes everything we do possible, from presenting great works of art, to offering education programs for our youth, to making the museum accessible to our communities. During this unprecedented time, membership support has helped sustain the museum, ensuring that our important work can continue, and we are truly appreciative. Without you, our work is not possible.

The MFA gratefully acknowledges those generous members who provided additional support through membership at the Sustainer and Advocate levels:

ADVOCATE

\$2,500

Erin and James Daly

Liz Dimmitt and Piers Davies

Sunny and James Endicott

Jeff Franzen

Cristina Grasset and Ramiro Linares

Linda Meehan and Tom Brown

Carol and Frederick Vance

SUSTAINER

\$1,250

Laura Ashby and William Moody

Marion and William Ballard

Sharon and Randal Cochrane

Gary deBroekert

George R. Ellis

Beth and John England

Helen and David Feinberg

Susan and Mack Hicks

Karen Lang Johnston

Gerald Langlykke

Lisa LeGrow and Charles Campbell

Suzanne and Jim MacDougald

Barbara and Fred McCoy

Demi and Sam Rahall

Marianne and Joseph Sabadish

Susana and Yann Weymouth

Jean G. Wittner



The MFA welcomed **812** new member households during the 2019-2020 fiscal year, with **5,633** members supporting the museum, a **5% increase** over the prior year.



DOCENTS

MFA docents are significant volunteers and art enthusiasts who interact with visitors exploring the MFA's collection and special exhibitions. These dedicated individuals create stimulating conversations and provide memorable experiences for anyone in the galleries. Docents generally conduct more than 700 tours each year, offering their availability seven days a week. There was a new class of docents this year who completed special training to adapt to a curriculum for our sixth-grade program tours, *Art as Evidence*. Thank you to MFA docents for sharing their knowledge, and creating delightful and enlightening experiences for our visitors. Tour-giving docents in the 2020-2021 fiscal year are listed below.

Lily Alcott
Andi Barlow
Maxine Buccholtz
Jean Calandra
Dorothy Cappadona
Laura Crawford
Alice Dasenbrock
Karen Dean
Tina Douglass
Patricia Fain
Bonnie Farnsworth
Arthur Finegold
Ann Gasper
Alex Gifford
Seymour Gordon
Susan Gordon
Rita Gram
Ena Groff
Ken Habershon
Janet Hammer

Victoria Hawley
Sarah Hoddinot
Alice Hoffman
David Hoffman
Roberta Hosken
Andrea Howell
Helen Huntley
Camilla Kilgroe
Christie Larson
Sue Lewis
Lee Linkous
Debbie Lopez
Sigrid Lovfald
Kathryn Ludwig
Debi Mazor
Karen McKenna
Mary Mellstrom
Sheila Miller
Marian Moore
Glenn Mosby

Patti Novack
Pona Pierkarski
Frank Purrelli
Susan Rhein
Teddi Robbins
Judith Sauers
Cathleen Schott
Anne Shamas
Heidi Sherman
Donna Sinicrope
Texann Smith
Ruth Spears
John Stewart
LaVonne Stimadorakis
Marla Sutton
Sheila Tempelmann
Susanne Ward
Marylee Zink
Eleanor Whiteside



SUPPORT GROUPS

The MFA has five support groups that operate to advance the museum's mission. These groups add to educational offerings and sustain programs while creating excitement about the museum.

COLLECTORS CIRCLE

The Collectors Circle is comprised of art connoisseurs dedicated to enhancing the museum's collection by raising funds for significant acquisitions. New acquisitions are typically announced at the annual gala that was cancelled this year due to COVID-19. The MFA was thrilled to announce the addition of *Leviathan Zodiac* from the series *World Stage: Israel* (2011) by contemporary artist Kehinde Wiley, a compelling purchase made by the Collectors Circle with additional funds donated by Jim Sweeny.

FRIENDS OF PHOTOGRAPHY

The Friends of Photography is dedicated to increasing public awareness of fine art photography through lectures, events, and workshops. Members help promote the museum's photography collection, which is recognized as one of the finest in the Southeast.

FRIENDS OF THE DECORATIVE ARTS

The Friends of Decorative Arts (FODA) expands understanding of the variety and beauty of fine furniture, jewelry, ceramics and glass as an integral part of the MFA's collection. This group meets September through May for programming on acquisitions, exhibitions, lectures, and symposia.

MARLY MUSIC SOCIETY

The Marly Music Society presents live performances at the MFA each year. This group usually operates in the summer at the close of one fiscal year and the beginning of another. Performances in the 2019-2020 fiscal year were cancelled as a result of COVID-19.

THE CONTEMPORARIES

The Contemporaries was formed to build engagement among contemporary art enthusiasts and offered diverse programming, with a focus on supporting contemporary art and exhibitions at the MFA. The educational meets the social at Contemporaries' events, encouraging the collecting of contemporary art, and supporting local galleries and artists.



Thank you to the donors who sponsored activities within these groups:

Anonymous (2)

Cynthia Astrack

Kathy and Patrick Beyer

Jacqueline and William Brown

Hillary Cone

Chitraneer and Dr. Robert Drapkin

Susan and Mack Hicks

Mary Alice McClendon

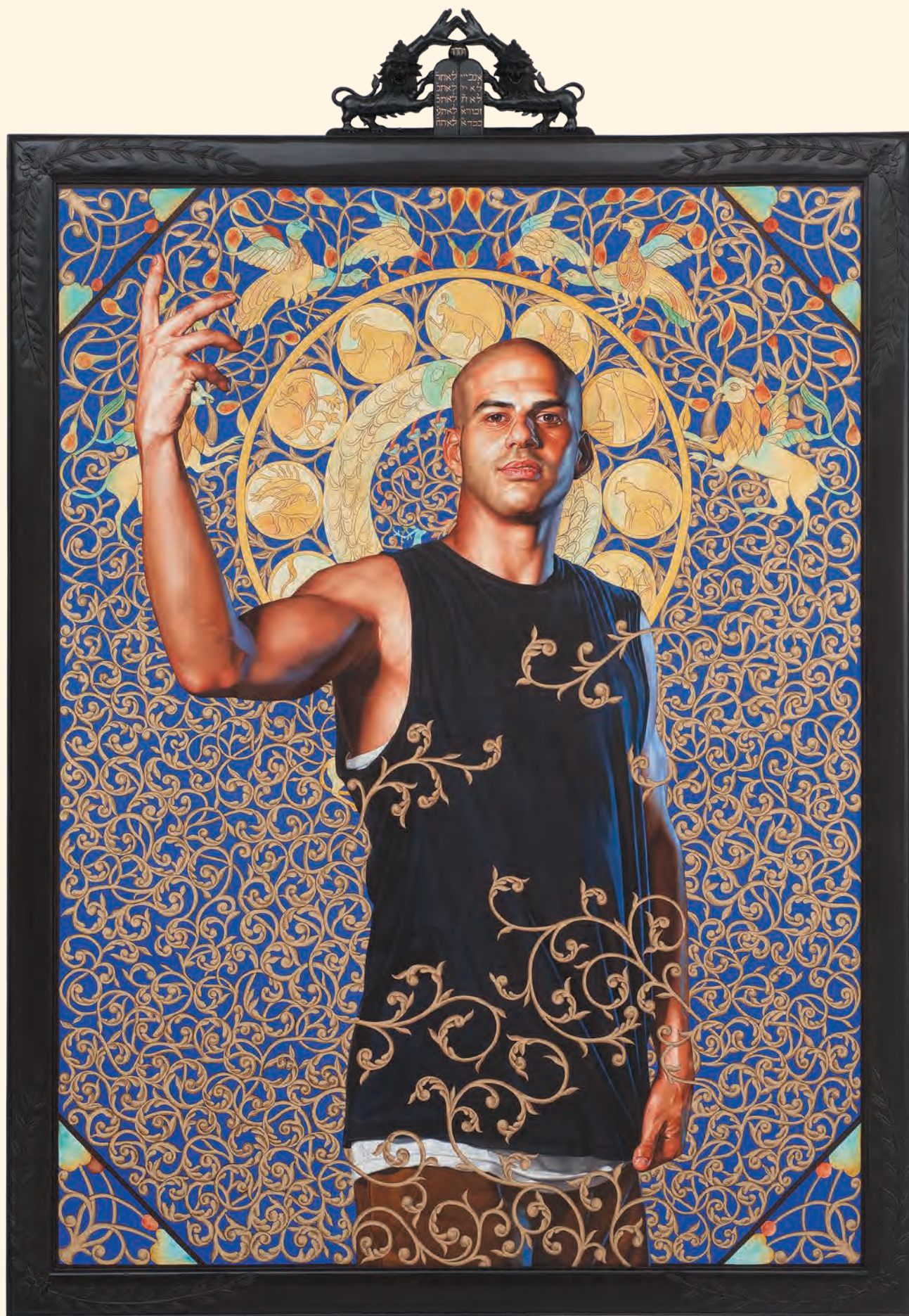
Barbara and Fred McCoy

Riverwalk Wealth Advisors | Matthew Lytell

Mary Shuh

Dr. Susan M. Taylor

Helen Torres Foundation



MEMORIALS AND TRIBUTES

Gifts made in honor, or in memory, of someone are a special tribute to the honoree and meaningful to the museum. Your support of the MFA sustains exhibitions, public programs and the community resource that your honorees would have enjoyed. Thank you for becoming part of our mission through your generosity of honoring another. The list below acknowledges the donor and their tributes:

IN MEMORY OF HARRIET JANE BLACK

Nancy Jane and Doug Haberland

IN HONOR OF VICTOR BONAT

Barbara Josephine Ludwid-Bonat

IN MEMORY OF CARY BOND

Ellen Cotter

IN MEMORY OF PATRICIA BRANT

Dr. John E. Schloder and Mr. Terence Leet

IN HONOR OF MARK CARLSON

The Russell Family

IN MEMORY OF ELEANOR DAVIDOV

Vera and Larry Green
Sharon and Larry Stoloff
Marilyn and Eric Tublin
Diane and Harlan Weiss
Kathi and Edward Whitman

IN HONOR OF DARYL DEBERRY

Kristine Dartnall
Gerry and Allen Davidson
Linda and Michael Davis
Curtis Harwell
Cynthia Kirby
Deborah and Jim Long



IN HONOR OF JOHN FATSEAS

Raymund Foundation

IN HONOR OF ROYCE HAIMAN

Ann Shelton

IN MEMORY OF HAZEL AND BILL HOUGH

Lynell and C. Robert Bell
George and Pamela Campbell
Daryl DeBerry
Dr. and Mrs. John T. Garrigues, Jr.
Royce Haiman
Helen Hameroff and Frantz Christensen
Elaine and Robert Hearn
Susan and Mack Hicks
Julie Kenfield
Karen King
Toni and Kent Lydecker
Monika and Frederick MacFawn
Barbara and Frederic McCoy
Glenn and Dav Mosby
Rebecca Nagy
Sheila Nicely
Patti and Irwin Novack
Jacquelyn and Harry Piper
Gail and Fred Razook
Louise and Charles Reeves
Sandy Rief and Diane Eger
T. Marshall Rousseau
Iris Salzer
Dr. John E. Schloder and Mr. Terence Leet
Kristen A. Shepherd
Margaret and Bert Smith
Hugh and Keith Tulloch
Judith Vezmar
Beth Houghton and Scott Wagman

IN MEMORY OF JANET HUNTER

Elaine and Robert Hearn
Barbara and Frederic McCoy

IN MEMORY OF GEORGE MCWICKER

Dr. Dimity and Mark Carlson

MEMORIALS AND TRIBUTES

IN HONOR OF DR. LAWRENCE AND CAROLE MERRITT

Barbara and Frederic McCoy

IN MEMORY OF MICHAEL MILKOVICH

Simone and Rep DeLoach
Barbara and Doug DeMaire
Helen Hameroff and Frantz Christensen
Sharon Hennig
Patti and Irwin Novack
Arlene Rothman
Dr. John E. Schloder and Mr. Terence Leet

IN MEMORY OF BETTY JEAN MILLER

Kathleen and Raymond Arsenault
Alan Jenkins

IN MEMORY OF JAMES E. MORTENSEN

Brenda Verbeck

IN MEMORY OF GRETA MYERS

Maria Dawson
Dr. John E. Schloder and Mr. Terence Leet
Sheila Tempelmann

IN HONOR OF JENNIFER POSEY

Patricia and Lamar Marchese

IN MEMORY OF FRANCES PRUITT

Gail and Fred Razook

IN MEMORY OF SAM RAZOOK

Carol and Fred Whaley

IN MEMORY OF CAROLYN REHBERGER

Sheila Tempelmann

IN MEMORY OF PHILIP J. ROGERS

Suzanne Kirkconnell

IN MEMORY OF HELENE S. ROSS

Lynn Bikofsky
Elizabeth Ross
Myrna Finn
Yupei Hu
Krokidas and Bluestein LLP
Elka and Seth Sachs
Barbara Stier

IN MEMORY OF SHELDON ROTHMAN

Helen Hameroff and Frantz Christensen

IN MEMORY OF MATTHEW RUTENBERG

Sheri and Charles Berke
Silvio and Patricia Gaggi
Thomas Geoghegan
Victoria Glennon
Rachel McGarry
Christina Purdy
Jean Moore and Steve Rubin
Daniel and Joan Rutenberg
Laura and Marc Rutenberg
Lisl Schick
Irene and Leo Spiegel

IN HONOR OF ADELIA SAMAHA

Robert and Marlynn Jabaily

IN HONOR OF KRISTEN A. SHEPHERD

Meghan McCauley

IN HONOR OF KRISTEN A. SHEPHERD AND TODD BERMAN

Daryl DeBerry
Harriette Goldenberg

IN MEMORY OF JAN STOFFELS

Vera and Larry Green
Dr. John E. Schloder and Mr. Terence Leet

IN MEMORY OF LYNN STRICKLAND

Robert Strickland

IN MEMORY OF MARTHA SWEENEY

Louise and Charles Reeves

IN MEMORY OF KEITH TULLOCH

Barbara and Doug DeMaire
Barbara and Frederic McCoy

IN MEMORY OF EVELYN WILTY

Barbara and Doug DeMaire
Dr. John E. Schloder and Mr. Terence Leet

IN MEMORY OF PEGGY WORD

Dr. John E. Schloder and Mr. Terence Leet

LEGACY SOCIETY

A true legacy encompasses values and passions that are shared with future generations. MFA Legacy Society members support what they cared about in life by including us as a beneficiary of estate plans. It can be as simple as arrangements to continue an annual fund gift, or as transformative as an endowment. Legacy gifts are as varied as the individuals who plan them, and each bequest is significant for our future. Thank you to our current MFA Legacy Society Members for sustaining the MFA to be enjoyed by all. To become part of this special group, contact Daryl DeBerry, Director of Institutional and Planned Giving.

Margaret Amley	Smelia Damjanovich*	Estelle Halle*	Sam Mann*
Dr. Edward Amley	Gary Damkoehler	Charles Henderson*	Luther Martin*
Jim Amrhein	Bruce Dandrew	Bettina Herman	Mary Alice McClendon
Mark Anderson	John Davis*	Stephen Herman	Sally McConnell
Lewis Andrews*	Nomina Davis*	Marcia Hersey	Natalie McMasters*
Cynthia Astrack	F. Delphine Day*	Irwin Hersey*	Sonya Miller*
Alexander Astrack*	Paul Devereaux	Susan Hicks	Glenn Mosby
Dr. Susan Beaven	Diana Dorken	Mack Hicks	Dav Mosby
Elizabeth Belting*	Tina Douglass	Liliana Hodges	Mary Murdock*
Robert Bennett*	Robert Douglass	Laura Hollar*	F. Barbara Niemczycki*
Dr. Robert Bianchi	Wilma Dowdell*	Hazel Hough*	Josephine O'Brien*
Anna Bianchi	Alice Downs*	William Hough*	Richard Oliver
Louise Bishop*	Dr. Robert Drapkin	Lois Howrigan*	Natalie Oliver
Vance Bishop*	Chitrane Drapkin	Richard Hyse*	Meta Osborn*
Isabel Bishop*	Thomas Dreier*	Josephine Hyse*	Beverly Pankonie
Emily Bizjak*	C. Robert Durden*	Mardi Johnson	Wayne Parrish*
Hazel Blair*	Dr. Richard Eliason	Helen Jones*	Frances Parrish*
Geraldine Blazey	Aila Erman	Judith Jourdan	Frances Parsons*
Robert Blazey*	Richard Farber	John Kauffeld	Bonnie Peavy
Anne Bleakley*	Susan Fearnley	Loveda Keating*	Mary Perry*
Barbara Boger*	Peter Field*	Camilla Kilgroe	Richard Perry*
Elizabeth Bohlman	Vicki Fox	Diana King	Stephen Peters
Clara Boldt*	Frank Fox	Alan Kloman	Rita Peters
Patricia Brant*	Rada Fredrikson*	Catharine Knapp	Eric Peterson
Rex Brasell*	Hal Freedman	Webster Knight*	Harry Piper
William Brown	Jerelyn Fyvolent	Barbara Knight*	Jacquelyn Piper
Jacqueline Brown	Louise Gallagher*	Hanna Koch*	Eugene Ponessa
Laura Bryant	Dr. John Garrigues, Jr.	Frederic Koester*	Margaret Ponessa
Matt Bryant	Louise Garrigues	Rudolph Kohler	Stephen Poohar
Keith Bucklew	Adele Gilbert*	Robert Kokol	Marie Potvin*
Penelope Burns	Dr. Gordon Gilbert	Beth Kokol	John Proctor*
Eddy Burns*	Michele Gilbert	Odette Leary*	John Ptacek
Bryce Burton*	Helen Glaser*	Irene Lewis	Stephanie Puffer
Elnora Burton*	Jean Gollay*	Katherine Lewis*	Demi Rahall
Ralph Campbell	Elinor Gollay	Terry Loebel*	Sam Rahall
Guna Carr	Seymour Gordon	H. Maxine MacDonald*	Zaida Ramseur*
Bonita Cobb	Susan Gordon	Fay Mackey	Fred Razook
Hillary Cone	Patrick Green	Charles Mackey*	Mary Reddick*
Ralph Crammond*	Lawrence Green	Dorothy Mais*	Jim Reichert
Jean Crerar*	Freda Hack*	Joan Malone*	Margaret Rigg*
Carol Dameron	Royce Haiman	Mary Joan Mann*	Anni Rocke*

LEGACY SOCIETY

Robert Rosen
Sam Ross
T. Marshall Rousseau
Marilyn Ruga
Otilie Runyon*
E. Stan Salzer*
Iris Salzer
Susan Savage
Neil Savage
Candy Scherer
Dr. John Schloder
Ruth Seabury*
Charlotte Searle*
Kristen Shepherd
Starr Sherman*
Peter Sherman*
Mary Shuh
Frederick Shuh*
Norma Sleeper*
Norman Smith
Martha Smith
Zelda Smith*
Bill Smith

Mirella Smith
Herb Snitzer
Anne Soehl
Eugene Sorbo*
Julia Sorbo
Mildred Spelman*
Gladys Starling*
Ellen Stavros
Kathryn Stenquist*
D. N. Stern
Rebecca Stern
Helen Stevenson*
Stanton Storer
Dorothy Stovall*
Kathleen Stover
William Stover
Carmen Stover
Margaret Strum Acheson Allesee
James Studdiford
Suzanne Sutker
Jim Sweeny
Martha Sweeny*
Carl Tandberg*

Herb Tempelmann*
Sheila Tempelmann
Stephen Thomas*
Cary Bond Thomas*
Nancy Thomas
Helen Torres
Rebecca Townsend
Mary Trice*
Clare Trice*
Sally Truby
Earnest Truby*
Phyllis Truitt*
Carol A. Upham
Burk Uzzle
Janet Van Dellen*
Lana Van Galder
Gertrude Van Vleet*
Calvin Vary*
Marjorie Vary*
Michele Vogel
Anne von Rosenstiel*
Betty Wagner*
Pearl Walker*

Louise Weaver
Jane Weber*
Rudolph Weihe*
Marie Weir*
Herbert Weisinger*
Louise Wenzel*
Larry West
Richard Wiest*
Phyllis Williams*
Marie Williams*
Mary Wilson*
Geraldine Wilson*
Kathleen Wish*
Steve Woodrough
Margo Woodrough
Margaret Word*
Phyllis Zarnas
Roger Zeh
Sally Zeh
William Zewadski

*In Remembrance

“The legacy of heroes is the memory of a great name and the inheritance of a great example.”

—**Benjamin Disraeli**

Four individuals continued their support of the MFA with legacy gifts received this fiscal year, continuing to make the museum a beneficiary of their generosity.

Hazel C. Hough
William R. Hough
Meta Osborn
Frances Parsons



LETTER FROM THE CHAIRMAN OF THE BOARD



Dear MFA Community,

The economic, psychological and social impact the COVID-19 has wrought on our country has been profound. Whether we live in a small rural community, a vibrant small city like St. Petersburg or a large metropolis, each of us has been forced to alter our thinking and everyday activities. It has been difficult to adapt, but in the struggle, I dare say that each of us has learned a bit more about ourselves, and has new appreciation for the everyday freedoms we had so taken for granted.

Individuals and organizations were impacted in difficult ways that required strength and resilience. The Museum of Fine Arts temporarily closed its doors on March 14, 2020 in response to this ensuing national emergency and remains committed to doing its part to mitigate the spread of the virus with data-driven decisions responsive to current risks. We reopened in mid-September, and our highest priority will continue to be the health and safety of our members, visitors, volunteers, and staff.

This temporary closure resulted in the cancellation or postponement of many popular and highly-anticipated events and exhibitions. *In Full Bloom: Netherlandish Flower Paintings and Trade*, Painting in the Park, and the Margaret Acheson Stuart Society's 23rd Annual Art in Bloom and its related events are just a few. We are incredibly grateful to our members, donors, and all the volunteers and staff who gave their time and energy to plan these events this year as they have in every other year. I assure you that these wonderful happenings will return.

We maximized the closure to undertake not only a deep cleaning of the entire museum, but also a renovation and reinstallation of our collection galleries which was planned before the pandemic. I am happy to report that it was completed ahead of schedule, and I couldn't be more impressed with the results. The nature of the collection allows us to tell the story of art history, and now visitors can experience that, and learn about our shared human history 5,000 years of art can tell.

We are so grateful to our members and donors who responded with donations, early membership renewals, increased membership levels, and those who simply asked how they could help. Your generosity and continued support of the MFA helped us continue to serve our wonderful community, and offer an escape for peace, pleasure and joy. Please accept our deepest appreciation for your support during these defining times.



A handwritten signature in black ink, which appears to read "Fred S. Razook, Jr.".

Fred S. Razook, Jr.
Chairman of the Board

WAYS OF GIVING

OUTRIGHT GIFTS

Outright gifts can include checks, appreciated property, gifts of art or other tangible personal property. All cash gifts are 100% tax deductible.

GIFTS OF APPRECIATED STOCK

By giving appreciated stock to the museum, donors may avoid paying capital gains tax and receive a tax deduction for the fair market value of the gifts. For instructions on the transfer of stocks, please contact the Development Office.

IRA CHARITABLE ROLLOVER

The charitable IRA rollover, or qualified charitable distribution (QCD), is a special provision allowing donors to exclude from taxable income and count toward required minimum distribution certain transfers of Individual Retirement Account (IRA) assets directly to public charities such as the museum. Your financial or tax advisor can help with this transaction.

PLANNED GIFTS

Planned gifts such as charitable remainder trusts, charitable lead trusts, retained life estates, retirement plan designations, life insurance designations or bequests may reduce inheritance taxes and benefit the museum. Check with your financial advisor for the best plan, and let us know of your intent so we can recognize you as a member of our Legacy Society.

NAMING RECOGNITION

In recognition of leadership gifts, donors may reserve naming rights for exhibitions, programs and specific spaces throughout the museum's original building and Hazel Hough Wing. Learn more by contacting the Development Office.

MATCHING GIFTS

Please help by exploring if we might be able to add your company to this list. Many employers sponsor matching gift programs to match charitable contributions made by their employees. Gifts from retirees and spouses may also qualify for a match. Ask your company human resource department for program details.

For more details, or to inquire about other ways you can support the Museum of Fine Arts, please contact the MFA Development Office at (727) 896-2667 or visit mfastpete.org/give.



IMAGE CREDITS

Page 1

Georgia O'Keeffe, *White Abstraction (Madison Avenue)*, 1926, Oil on canvas, Gift of Charles C. and Margaret Stevenson Henderson in memory of Hunt Henderson

Page 4

Jacob Lawrence, 1920s. *The Migrants Cast Their Ballots*, 1974, Serigraph, Gift of the Lorillard Corporation

Page 15

British, *Table Centerpiece*, c. 1800–1900, Gilded brass; metalwork, Gift of Mrs. Robert Zaiser

Page 16

Hubert Robert, *A Fountain in the Park*, c. 1780–85, Oil on canvas, Gift of Mrs. Wally Bishop and the Rexford Stead Art Purchase Fund

Page 17

Norman Lewis, *Untitled*, 1951, Oil and ink on cream wove paper, Museum purchase with funds provided by Jim Sweeney

Page 18

Theo Wujcik, *Canto II*, 1997, Polymer emulsion and charcoal on canvas, Gift of Bonita Cobb

Page 19

Kimiyo Mishima, *Bābekyū-yō Mokutan (Barbeque Charcoal)*, 2005, Glazed stoneware with silkscreen print, Gift of Hazel and William R. Hough

Italian, *Pair of Covered Jars*, 1700–1800, Savona faience; glazed earthenware ceramic, Given in memory of Jane Sherwood Nelson by her family and friends

Page 21

Gillis van Tilborgh, *The Interior of a School Room*, c. 1660, Oil on canvas, Gift of Dr. Robert and Benette Gilbert Rosen

Page 22

Sam Contis, *Cover*, 2013, Gelatin silver print, ed. 2/5, Gift of the Friends of Photography

Page 23

Kehinde Wiley, *Leviathan Zodiac* from the series *World Stage: Israel*, 2011, Oil and gold enamel on canvas, Acquired from the Collection of Blake Byrne, Los Angeles, Museum purchase with funds donated by the Collectors Circle for its 25th Anniversary with additional funds from Jim Sweeney

Page 24

Willard Leroy Metcalf, *The Mountain (Stockbridge, Massachusetts)*, 1909, Oil on canvas, Purchased with funds from the Estate of Lillian Josephine Martin

Page 27

Elihu Vedder, *Sunset (The Temptation of St. Anthony)*, 1865, Oil on panel, Museum purchase

Page 28

Elisabeth Louise Vigée-LeBrun, *Julie LeBrun as Flora (altered)*, 1799, Oil on canvas, Museum purchase

Page 29

Sicán Culture, Peru, *Kero (Effigy Beaker)*, c. A.D. 900–1100, Gold alloy, Gift of Dr. Mark Sheppard



MUSEUM OF FINE ARTS

**MUSEUM
OF FINE ARTS
ST. PETERSBURG**

255 BEACH DRIVE NE, ST. PETERSBURG, FL 33701
MFASTPETE.ORG

This Annual Report acknowledges contributions made to the Museum of Fine Arts during the 2019-2020 fiscal year from July 1, 2019 through June 30, 2020. Every effort has been made to ensure accuracy. Please notify Mikeesha Means, Manager of Individual Giving, (727) 896-2667 ext. 231 if our records need to be amended.